

Courses 2022







Federation University	01	Engineering	28
Federation is your right choice	02	Humanities, Social Sciences and Criminology	32
Our campuses and locations	04	Information Technology	36
Our Support Services and Programs	06	Nursing, Midwifery, Paramedicine and Health	40
Scholarships and Grants	07	Performing Arts, Visual Arts	44
Fed Living arrangements	08	Psychology	48
Your life at Fed	09	Science	50
Where do you start?	10	Sport, Health, Physical and Outdoor Education	54
Study to suit your lifestyle	11	Higher Degrees by Research	58
Work Integrated Learning and Industry Placement Program	11	What will it cost me?	60
Course Summary 2022	12	Higher education applications explained	61
Pathway Course	16	How do I apply?	62
TAFE	18	My next steps	63
Business	20	There's more than one way	64
Education and Early Childhood	24	Top 10 perks of being a Federation University student	65

Federation University Australia acknowledges the Traditional Custodians of the lands and waters where our campuses, centres and field stations are located and we pay our respects to Elders past and present. We extend this respect to all Aboriginal and Torres Strait Islander and First Nations Peoples.

The Aboriginal Traditional Custodians of the lands and waters where our campuses, centres and field stations are located include:

<b>Wimmera</b>	Wotjobaluk, Jaadwa, Jadawadjali, Wergaia, Jupagulk
<b>Ballarat</b>	Wadawurrung
<b>Berwick</b>	Boon Wurrung and Wurundjeri
<b>Gippsland</b>	Gunai Kurnai
<b>Nanya Station</b>	Mutthi Mutthi and Barkindji
<b>Brisbane</b>	Turrbal and Jagera



At Federation University, we aim to make a real difference to the lives of every student who walks through our doors, and to the communities we help build and are proud to be part of.

We are one of Australia's oldest universities, known today for our modern approach to teaching and learning. For 150 years we have been reaching out to new communities, steadily building a generation of independent thinkers united in the knowledge that they are greater together.

### **Be part of our diverse community**

Today, we are proud to have more than 21,000 domestic and international students and 114,000 alumni across Australia and the world. Into our supportive, inclusive and thriving community, we welcome people from all backgrounds and cultures.

CELEBRATING OVER **150** YEARS



# Federation is your right choice

## Top reasons to study at Fed



### EXCELLENCE IN RESEARCH\*

**Rating 5 – well above world standard in:**

Applied Mathematics, Environmental Science and Management, Civil Engineering, Clinical Sciences, Human Movement and Sports Science, and Nursing

**#1**

**in Australia for  
TEACHING QUALITY<sup>2</sup>**

**#1**

**in Australia for First Generation  
STUDENT ENROLMENTS<sup>3</sup>**

**#1**

**in Victoria for Graduate  
FULL-TIME EMPLOYMENT<sup>3</sup>**

**#1**

**in Victoria for  
STUDENT SUPPORT<sup>3</sup>**

**#1**

**in Victoria for  
TEACHING QUALITY<sup>1</sup>**

**#1**

**in Victoria for  
OVERALL EXPERIENCE<sup>2</sup>**

**#1**

**in Victoria for  
SKILLS DEVELOPMENT<sup>3</sup>**

**#1**

**in Victoria for  
LEARNER ENGAGEMENT<sup>2</sup>**

\* Excellence in Research Australia, 2018 National Report

1 The Good Universities Guide 2021, undergraduate level

2 The Good Universities Guide 2021, postgraduate level

3 The Good Universities Guide 2021, undergraduate  
and postgraduate level

150

## Our History

The University has a distinguished history as one of Australia's oldest higher education institutions. We have a strong tradition of education and training delivery and celebrated our 150 year tradition in 2020. We became Federation University Australia in January 2014.



## Our research changes lives

Our research is ranked well above world standard, with the university achieving the highest possible five-out-of-five rating in seven research areas by Excellence in Research Australia (ERA). We're driven by the innovative research we do, and the brilliant minds that power it.

We collaborate with communities and industries across Australia and overseas and our work has measurable impact on our wider society.



## State-of-the-art facilities

When it comes to your classes, our state-of-the-art facilities provide everything you need to get ahead. You will have access to an array of essential and contemporary teaching and learning technologies.

## Small class sizes

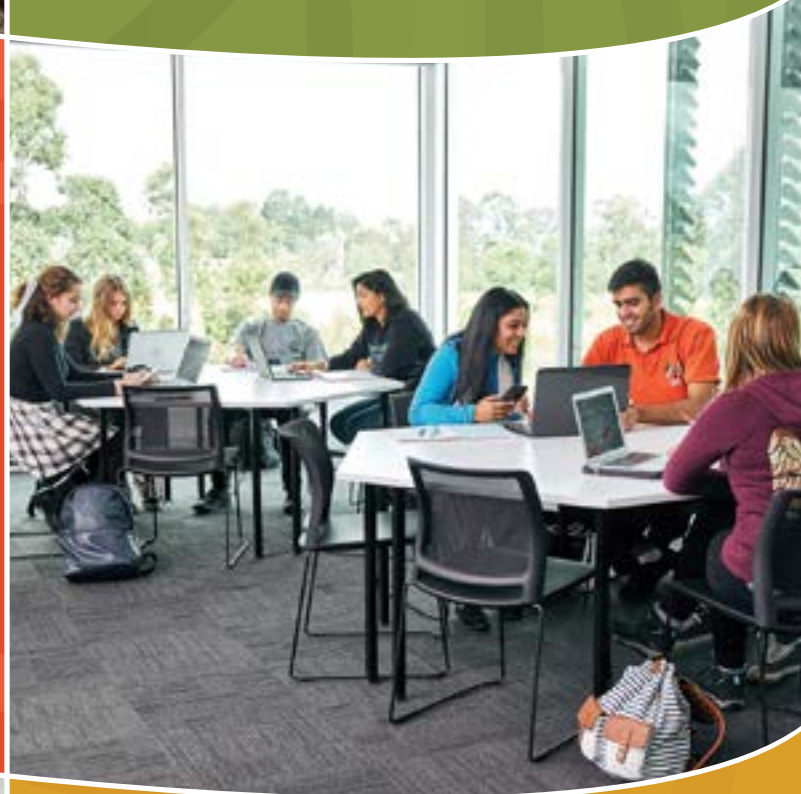
Our class sizes are small, meaning you can receive one-to-one assistance directly from your lecturers and tutors.

## You are part of something bigger

This begins the moment you arrive. From our clubs, societies and sports teams, to our recreational trips and activities, you'll have every opportunity to get involved in Federation life – to meet new people, get inspired and build lifelong connections.

## Support that never stops

Even after you graduate, you're still part of our community. With strong relationships with industry partners, your degree will provide opportunities that are set to grow.



## Diversity

We are committed to providing equal opportunity and freedom from discrimination and harassment for all members of the Federation community, and to creating an environment that reflects our values; the social and cultural diversity within the communities it serves.





## Our campuses and locations

Being at university is about feeling comfortable with where you're studying, not just what you're studying. With our six campuses stretching across Victoria, from the Wimmera and Ballarat to Berwick and Gippsland, we're sure you'll find a campus that's right for you. Our campus in Brisbane, one of the fastest-growing cities in Australia, gives students even more choice.

Find out more at [federation.edu.au](https://www.federation.edu.au)





### **Mt Helen Campus (Ballarat)**

Our flagship Ballarat campus is home to both Federation TAFE and higher education courses. Set on 110 hectares of natural bushland, Mt Helen combines a beautiful location with cutting-edge teaching and research facilities – and is just minutes from the centre of Ballarat.

### **SMB Campus (Ballarat)**

On the outside, our SMB Campus is recognised for its historic 19th century buildings. But today it's home to Federation College and Federation TAFE, and includes top engineering and construction centres and a purpose-built ceramics studio, kiln room and exhibition space. It delivers TAFE vocational education, apprenticeships, skills training and preparatory courses.

### **Camp Street Campus (Ballarat)**

Located right in the centre of Ballarat, Camp Street is known for its highly-regarded Arts Academy – running visual and performing arts courses. With a mix of specialised theatres and galleries, the campus provides the kind of environment needed to hone your creativity, experiment and showcase your work.

### **Rural Sciences Skills Centre (Ballarat)**

Spread over two locations around Ballarat, the Rural Skills Centre is recognised for its excellent TAFE training facilities. At Gillies Street, TAFE students make use of the wetlands and gardens of Ballarat's Lake Wendouree and Botanical Gardens precinct, while Mt Rowan has purpose-built agricultural facilities for TAFE students to engage in livestock and crop-based farming training.

### **Berwick Campus**

Berwick is our newest campus, located around 40km south-east of the Melbourne CBD, easily accessible by train and just off the Princes Freeway. Equipped with a newly developed science lab, nursing labs, library and on-campus accommodation, it also features an expansive solar array that dramatically reduces our carbon footprint, and metro and country rail links are within walking distance.

### **Gippsland Campus (Churchill)**

Our Gippsland Campus combines the best of what campus life is all about – a welcoming community, innovative learning environment and excellent research facilities (Carbon Technology Research Centre). Situated on 60 hectares of landscaped grounds and adjacent to the town of Churchill, it's less than two hours from Melbourne.

### **Wimmera Campus (Horsham)**

With its TAFE and degree study options, Wimmera appeals to all kinds of students, from differing backgrounds. Fully equipped to meet the needs of today's workplaces, the campus features a hairdressing salon, a nursing training centre, as well as specialised plumbing, electrical, automotive, building and construction workshops, media production studio, library and computer study labs, large auditorium and video conferencing suites, research hub and student support services including Aboriginal Student Success Officer.

### **Brisbane Campus**

Primarily an international student campus, the Brisbane Campus is situated in the heart of Brisbane. The new architect-designed facility has the latest in technology and comfort and is within walking distance of great eateries, shopping and entertainment. It's also conveniently located near our preferred accommodation provider, StudentOne, and the Central train station.

### **Online study**

We have a range of fully supported online courses – so you can get ahead in your studies, without falling behind in other areas of your life.

### **Built for success**

Wherever you walk around our campuses, you'll find plenty of natural green spaces and nooks to meet up with people, study, or just take time out.

# Our Support Services and Programs

Being a university student is certainly exciting, but it's not without its challenges. With our range of student-focused academic pathways and support programs, support is always on hand.

## Aboriginal Education Centre

A support hub for Aboriginal and Torres Strait Islander students.

[federation.edu.au/aec](https://federation.edu.au/aec)

## Libraries

Welcoming spaces for groups and quiet study, our virtual library gives access to print books, ebooks, journal titles and streamed videos.

[federation.edu.au/library](https://federation.edu.au/library)

## Counselling

All students are welcome at our free and confidential counselling service.

[federation.edu.au/counselling](https://federation.edu.au/counselling)

## Chaplaincy

Chat with a chaplain for spiritual and pastoral care support, or any practical matters to do with university life.

[federation.edu.au/chaplaincy](https://federation.edu.au/chaplaincy)

## Support for students with disabilities

We want everyone to have full access to all our programs and facilities. If you need any help, just get in touch with our Disability and Learning Access Unit.

[federation.edu.au/disability](https://federation.edu.au/disability)

## Student careers and employment

The Careers and Employability team offer a range of events, programs and services enabling you to find work while you study, gain valuable work experience, plan for your future career and enhance your employment prospects.

[federation.edu.au/studentcareers](https://federation.edu.au/studentcareers)

## Student Advisory Service

If you have concerns about your education at Federation.

[federation.edu.au/studentadviser](https://federation.edu.au/studentadviser)

## Elite athlete, coach and performer university program

Our service lets you make flexible study arrangements so you can excel in both higher education and your sporting and performance goals.

[federation.edu.au/elite-athlete](https://federation.edu.au/elite-athlete)

## International Student Support

A hub for international students. We run English language practice, social activities and excursions, cultural celebrations and personal welfare support.

[federation.edu.au/international/student-support](https://federation.edu.au/international/student-support)

## Bookstores

Find the book you're after at the Berwick, Gippsland, Horsham and Mt Helen campuses.

[federation.edu.au/bookshop](https://federation.edu.au/bookshop)

## Children's centres

Federation Children's Centres offer a caring and supportive environment with flexible and stimulating learning experiences. Childcare and kindergarten programs are available for children up to 5 years. An environment for children to learn, explore and play. A number of external childcare centres are located within a short distance of the Berwick, Horsham and Brisbane campuses.

[federation.edu.au/childrens-centres](https://federation.edu.au/childrens-centres)

## Student Health

Health Centres are located on site at our Berwick and Mt Helen - Ballarat campuses, and a campus nurse at our Gippsland campus.

[federation.edu.au/health-centre](https://federation.edu.au/health-centre)

## Student Academic and Study Support

Our Student Academic and Study Support programs (SASS) provide support for each stage of your university experience.

- **FedReady** prepares you for study.
- **Mentor** program helps you settle into your university life.
- **PASS** is a study group of your peers to share knowledge and support.
- **ASK** is a group of skilled students ready to answer your questions.
- **Online tutoring** is free via Studiosity.
- **Learning Skills Advisors** provide individual and group study support.
- **Study Skills** website offers a range of free online resources.
- **Student blog** is where students share their study experiences and tips.
- **SWOTVAC** study day is run each semester with PASS and stress-busting activities.

[federation.edu.au/sass](https://federation.edu.au/sass)

## Student HQ

Student HQ provides support to future and current students, in person, online or over the phone. It is one central location on each campus where you can visit to get any assistance you need relating to your studies.

Phone **1800 FED UNI**

Monday to Friday 9am – 5pm

email: [info@federation.edu.au](mailto:info@federation.edu.au)

[ask.federation.edu.au](mailto:ask.federation.edu.au)



# Scholarships and Grants

We offer a range of scholarships and grants to reward academic achievement, help students in financial difficulty and assist with some of the extra costs of studying. Students at all campuses and study levels are able to apply – to check out the full range of support we offer, head to **[federation.edu.au/scholarships](https://www.federation.edu.au/scholarships)**



"The Aboriginal Education Centre's Deadly Scholarship has provided me with the means to afford much needed equipment for my Bachelor of Fine Arts. I am very lucky to have been given the opportunity. Without it, everything would have been harder."

**Mitchil Harding**  
Bachelor of Fine Arts







## Fed Living arrangements

### Make campus your home

Living on-campus you'll get to meet new people from a range of backgrounds, cultures and courses in a community as thriving as it is inclusive.

We offer a range of accommodation options located on or close to our campuses in Ballarat, Gippsland and Berwick and our dedicated Residential Support Team is here to provide support and make your success and happiness a priority.

**[federation.edu.au/fedliving](https://federation.edu.au/fedliving)**

#### First year guarantee

FedLiving will guarantee a place in university accommodation to all new first-year applicants during your first year of study (eligibility and application guidelines apply).

#### Fees and inclusions

Living with us includes a range of amazing opportunities, new friends and lifelong memories. It also represents great value, which comes as a relief when you're trying to balance life and study.

Our accommodation options start from around \$175 per week, which includes all bills, internet, 24/7 access to residential support, various residential programs, events and activities.

#### Benefits of living on campus

##### Success

Federation University research shows students who live with us are more likely to succeed.

##### Friendship

Develop instant networks and lifelong friendships with a sense of community.

##### Opportunity

Amazing opportunities, planned experiences, activities and so much fun.

##### Support

24/7 support so you can enjoy a balanced living and learning community.

##### Convenience

For peace of mind and convenience residences are located on, or close to campus.





## Your life at Fed

For most of us, university is about getting to that next level professionally and academically. But it's also about meeting new people, building connections and making memories. Here's how you can make the most of our vibrant student community.

**[federation.edu.au/starting-fed](https://federation.edu.au/starting-fed)**

### Student groups

Whether you're creative, spiritual, sporty or something else entirely, there's a student group for you OR the ability and support to start your own club. Hosting a variety of events and activities throughout the year, student groups are a fantastic way of getting involved in uni life.

**[federation.edu.au/clubs](https://federation.edu.au/clubs)**

### Student representation

The Student Senate works hard across all campuses to make sure your voice is heard. Elections are held annually for interested students to join.

**[federation.edu.au/studentsenate](https://federation.edu.au/studentsenate)**

### Federation Alumni

When you graduate from Federation, you're still part of the family. Through our alumni community, you can connect with people from all over the world, share common experiences and discover new opportunities.

**[federation.edu.au/alumni](https://federation.edu.au/alumni)**

### Sport and recreation

We have a range of sport and fitness programs to suit everyone's needs, from physical activity to participation and competitive sport, with facilities on campus and virtual options as well.

**[federation.edu.au/sport](https://federation.edu.au/sport)**

**Mt Helen Campus** – The state of the art Health and Sports Precinct was opened in 2020. It features a community Health & Fitness Centre, heated indoor 25 metre pool, indoor sports stadiums, active studio, tennis courts and sporting ovals.

**Gippsland campus** – on campus can be found a multi-use synthetic field along with outdoor tennis and basketballs courts. Adjacent to the campus is Latrobe Leisure Churchill, providing a fully equipped gym, heated indoor 25 metre pool, squash courts and multi-use courts.

**Berwick Campus** – A multi-use outdoor court which can accommodate tennis, basketball, soccer and netball along with cricket nets can be found on campus. A number of local gyms and leisure centres can be found nearby.

### Study Abroad and Exchange

Our Study Abroad and Exchange programs offer the chance to become immersed in a totally different environment. This enriching experience will enable you to see and do things you wouldn't expect, and meet people who have grown up in a different culture. When you study abroad, you have a unique opportunity to make friends with people from all kinds of different cultures, and learn about other countries and customs.

Eligible study abroad and exchange students from the University's official exchange institutions, are welcome to enrol in either one or two semester programs in a wide range of academic areas. Students gain academic credit at a host institution while remaining enrolled with Federation University.

**[federation.edu.au/studyabroad](https://federation.edu.au/studyabroad)**

# Where do you start?

## Making the right choice

No matter what stage you're at in life, you'll have many questions about university. We're here to help you make an informed choice that's right for you.

## Don't know what to study?

Think about the following questions then discuss your options with us over the phone: **1800 333 864**

- What am I interested in?
- What do I enjoy doing?
- What are my values?
- What are my skills and strengths?
- What kind of career attracts me?
- What qualifications will I need to work in those areas?

Once you have a better idea of your options, you can find out more at **[study.federation.edu.au](http://study.federation.edu.au)**

View our publications at **[federation.edu.au/publications](http://federation.edu.au/publications)**

## Already know what to study?

Here's what you can do next:

- Visit us on campus – book a tour by calling us on **1800 333 864** or visit **[federation.edu.au](http://federation.edu.au)**
- Come to an information session – head to **[federation.edu.au/events](http://federation.edu.au/events)**
- Hear from those who know best (our students) at **[youtube.com/FedUniAustralia](https://youtube.com/FedUniAustralia)**

## Information for international students

No matter where you're coming from, you'll have the support you need to thrive at Federation.

**[federation.edu.au/multicultural-support](http://federation.edu.au/multicultural-support)**

## Deciding to apply

Once you've decided on what you want to study, your next step is to apply. Jump to the "Your next Steps" on page 63 to find out your application method and next steps.

Keep in mind you can apply for more than one course. If you don't get into your chosen course we can assist with alternative pathways or suggest different options.

If you need help at any point, call us on **1800 333 864** or email us at **[info@federation.edu.au](mailto:info@federation.edu.au)**





# Study to suit your lifestyle

Different people. Different modes.

Our flexible study options mean you can study the way you like.

And as your life changes, so can your study mode.

## On Campus

For the full university experience, study with us on campus.

## Off Campus / Online

Study anywhere you like – your home, local library or even your small business – providing the perfect option if you have a lot to juggle. If you've got the motivation, we've got the support, so you can study when and where you choose.

## Flexible delivery

It's a blend of online study with regular, scheduled on-campus classes. You might attend evening classes once a week, a few weekend classes, a one week block, or something similar, depending on the subject.

## Time commitment: Full-time versus Part-time study

You should look at committing approximately 10 hours per subject per week to your studies, which includes your own study time working on assignments and collaborating with your classmates.

**Full-time students** will typically take 4 subjects per semester.

**Part-time students** will typically take 2 subjects, meaning it will take a bit longer to complete your degree, but sometimes this is all that fits into busy lives!

Find the right balance between your studies, work, family and any other commitments. Whatever the study mode and whatever your time commitment, the course is the same – so choose what works best for you.

## Work Integrated Learning and Industry Placement Program

Across all programs and courses at Federation, Work Integrated Learning (WIL) may be real or simulated and can occur in the workplace, at the University, online or face-to-face. Other opportunities include voluntary placements, industry-based projects, simulated work experiences and Federation's Industry Placement Program (IPP) where students undertake a placement of up to 26 weeks with a host organisation in the same field as their studies. [federation.edu.au/wil](http://federation.edu.au/wil)

A placement is a smart way to boost your employability and meet the kind of people you'll be working with in the field. With our strong connections, we partner you with leading businesses and organisations. Various scholarships are available to assist students on placements. [federation.edu.au/scholarships](http://federation.edu.au/scholarships)

### Industry Placement Program - Financial support

Balancing study and placement can be hard to juggle financially, so we offer IPP students an organisation-funded scholarship of up to AUD \$15,000. To join this program, you'll need to have 30 credit points available in your degree. [federation.edu.au/ipp](http://federation.edu.au/ipp)



"When I was looking at universities, I discovered Federation University offered a six-month paid Industry Placement Program. To gain industry experience while at university and be paid \$15,000 was rare. I was based at Latrobe City Council for my industry placement and I was able to really advance my learning and development in Human Resource Management. Not only is the placement aspect of the program paid but it provides hands-on experience within industry which really is invaluable."

### Carly Tulloch

Bachelor of Business  
(Human Resource Management)

# Course Summary 2022

## STUDY TYPE

## CAMPUS

## DURATION (YEARS)

## GUARANTEED ATAR

## PAGE

### PATHWAY COURSES

PC	Foundation Access Studies (FAST) Program	Ballarat, Berwick, Gippsland, Online	0.5	N/A	16
U	Diploma of University Studies (Education)	Ballarat, Berwick, Gippsland	1.5	N/A	24
U	Diploma of University Studies (Engineering)	Ballarat, Gippsland	1.5	N/A	28
U	Diploma of University Studies (Information Technology)	Ballarat, Berwick, Gippsland	1.5	N/A	36
U	Diploma of University Studies (Sport, Physical and Outdoor Education)	Ballarat, Gippsland	1.5	N/A	55

### BUSINESS

U	Bachelor of Applied Management	Online	1	N/A	20
U	*Bachelor of Cognitive Enterprise	Ballarat, Berwick, Brisbane, Gippsland, Online	3	N/A	20
U	*Bachelor of Cognitive Enterprise (Professional Practice)	Ballarat, Berwick, Brisbane, Gippsland, Online	4	N/A	20
U	*Bachelor of Business (Human Resource Management)	Ballarat, Berwick, Gippsland, Online	3	50	22
U	Bachelor of Business (Management)	Ballarat, Berwick, Brisbane, Gippsland, Online	3	50	22
U	Bachelor of Business (Marketing)	Ballarat, Berwick, Brisbane, Gippsland, Online	3	50	22
U	Bachelor of Business	Ballarat, Berwick, Brisbane, Gippsland	3	50	22
U	Bachelor of Commerce (Economics and Finance)	Ballarat, Gippsland	3	50	23
U	Bachelor of Professional Accounting	Ballarat, Berwick, Gippsland, Online	3	50	23
P	Master of Business Administration	Ballarat, Brisbane, Gippsland	1.5	N/A	23
P	Master of Business Administration (International Business)	Ballarat, Brisbane	2	N/A	23
P	Master of Professional Accounting	Berwick, Online	2	N/A	23

### EDUCATION AND EARLY CHILDHOOD

U	*Undergraduate Certificate in Education Studies	Online	0.5	N/A	24
U	*Undergraduate Certificate in Vocational Education and Training	Online	0.5	N/A	24
U	Undergraduate Certificate in Sport, Physical and Outdoor Education	Online	0.5	N/A	54
U	Diploma of University Studies (Education)	Ballarat, Berwick, Gippsland	1.5	N/A	24
U	Diploma of University Studies (Sport, Physical and Outdoor Education)	Ballarat, Gippsland	1.5	N/A	55
U	Associate Degree of Vocational Education and Training	Online	Up to 2	N/A	24
P	Graduate Certificate in Education (Tertiary Education)	Online	0.5	N/A	25
U	*Bachelor of Secondary Education	Ballarat, Berwick, Gippsland	4	70	25
U	*Bachelor of Secondary Education (Health and Physical Education Teaching)	Ballarat, Berwick, Gippsland	4	70	55
U	Bachelor of Education (Early Childhood Education)	Ballarat, Berwick, <b>FLEX</b> Gippsland, <b>FLEX</b> Wimmera, Online	4	55	25
U	Bachelor of Education (Early Childhood and Primary)	Ballarat, Berwick, Gippsland, Online	4	70	25
U	Bachelor of Education (Primary)	Ballarat, Berwick, Gippsland	4	70	26
U	Bachelor of Education Studies	Ballarat, Berwick, Gippsland	3	50	26
U	Bachelor of Outdoor and Environmental Education	Ballarat, Gippsland	3	50	55
U	Bachelor of Sport, Physical and Outdoor Education	Ballarat, Gippsland	3	50	55
P	Graduate Certificate in Specialist Teaching	Online	0.5	N/A	26
P	Graduate Diploma in Education Studies - incorporating Graduate Certificate	Ballarat, Berwick, Gippsland, Online	1	N/A	26
P	Master of Specialist Teaching	Online	1.5	N/A	26
P	Master of Education Studies (by Coursework)	Ballarat, Berwick, Gippsland, Online	2	N/A	27
P	Master of Teaching (Early Childhood)	Ballarat, Online	2	N/A	27
P	Master of Teaching (Primary)	Ballarat, Online	1.5	N/A	27
P	Master of Teaching (Secondary)	Ballarat, Online	1.5	N/A	27





STUDY TYPE		CAMPUS	DURATION (YEARS)	GUARANTEED ATAR	PAGE
<b>ENGINEERING</b>					
U	Diploma of University Studies (Engineering)	Ballarat, Gippsland	1.5	N/A	28
U	Bachelor of Engineering (Electrical and Information Engineering) (Honours)	Ballarat	4	60	28
U	Bachelor of Engineering (Civil) (Honours)	Ballarat, Gippsland	4	60	28
U	Bachelor of Engineering (Mechanical) (Honours)	Ballarat	4	60	29
U	Bachelor of Engineering (Mining) (Honours)	Ballarat	4	60	29
U	Bachelor of Engineering (Mechatronics and Robotics Engineering) (Honours)	Gippsland, Online	4	60	29
P	Graduate Certificate in Community Energy and Micro-Grid	Ballarat, Online	1PT	N/A	29
P	Graduate Certificate in Maintenance Management	Online	1PT	N/A	30
P	Graduate Certificate in Mining Operation Health and Safety	Ballarat, Online	0.5	N/A	30
P	Graduate Certificate in Reliability Engineering	Online	1PT	N/A	30
P	Graduate Diploma of Engineering Maintenance Management	Online	2 PT	N/A	30
P	Graduate Diploma of Mining	Ballarat, Online	2	N/A	30
P	Master of Engineering Project Management	Ballarat	2	N/A	30
P	Master of Engineering Technology (Civil Engineering)	Ballarat	2	N/A	31
P	Master of Engineering Technology (Mechanical Engineering)	Ballarat	2	N/A	31
P	Master of Engineering Technology (Mining Engineering)	Ballarat, Online	2	N/A	31
P	Master of Engineering Technology (Mechatronic Systems Engineering)	Gippsland	2	N/A	31
P	Master of Engineering Technology (Renewable Energy and Electrical Power Systems)	Ballarat	2	N/A	31
P	Master of Maintenance and Reliability Engineering	Online	2	N/A	31
<b>HUMANITIES, SOCIAL SCIENCES AND CRIMINOLOGY</b>					
U	Undergraduate Certificate in Creative and Professional Writing	Online	1PT	N/A	32
U	Bachelor of Arts	Ballarat, Berwick, Gippsland, Online	3	50	32
U	Bachelor of Arts (Humanities) (Honours)	Ballarat, Gippsland, Online	1	N/A	32
U	Bachelor of Arts (Social Science) (Honours)	Ballarat, Gippsland, Online	1	N/A	32
U	Bachelor of Community and Human Services	Ballarat, <sup>FLEX</sup> Ballarat, Berwick, <sup>FLEX</sup> Berwick, Gippsland, <sup>FLEX</sup> Gippsland	3	50	34
U	Bachelor of Criminology and Criminal Justice	Ballarat, Berwick, Gippsland, Online	3	50	34
U	Bachelor of Human Services and Social Entrepreneurship	Ballarat, Berwick, Online	3	60	34
P	Graduate Certificate in Social and Community Services	Ballarat, Berwick, Online	0.5	N/A	34
P	Master of Social Work (Qualifying)	Ballarat, Berwick	2	N/A	34

#### STUDY LEVEL

U Undergraduate bachelor degree  
P Postgraduate studies  
PC Pathway Course

#### LOCATION

<sup>FLEX</sup> Flexible delivery is a blend of online study with regular, scheduled on-campus classes.

#### DURATION

PT Part-time study

#### GUARANTEED ATAR

See definition on p 61  
N/A Not applicable

#### DISCLAIMERS

\* Proposed course only.  
Subject to Federation's course accreditation processes.

# Course Summary 2022

## STUDY TYPE

## CAMPUS

## DURATION (YEARS)

## GUARANTEED ATAR

## PAGE

### INFORMATION TECHNOLOGY

U	Undergraduate Certificate in Information Technology	Online	0.5	N/A	36
U	Diploma of University Studies (Information Technology)	Ballarat, Berwick, Gippsland	1.5	N/A	36
U	Bachelor of Information Technology (Big Data and Analytics)	Ballarat, Online	3	50	36
U	Bachelor of Information Technology (Business Information Systems)	Ballarat, Berwick, Online	3	50	36
U	Bachelor of Information Technology (Cloud and Enterprise Computing)	Ballarat	3	50	37
U	Bachelor of Information Technology (Games Development)	Ballarat, Online	3	50	37
U	Bachelor of Information Technology (Networking and Security)	Ballarat, Online	3	50	37
U	Bachelor of Information Technology	Ballarat, Berwick, Brisbane, Online	3	50	38
U	Bachelor of Information Technology (Software Development)	Ballarat, Online	3	50	38
U	Bachelor of Information Technology (Professional Practice)	Ballarat	4	N/A	38
P	Graduate Certificate in Enterprise Systems	Ballarat, Online	0.5	N/A	38
P	Graduate Diploma of Technology (Software Engineering)	Ballarat	1.5	N/A	38
P	Graduate Diploma of Technology (Enterprise Systems and Business Analytics)	Ballarat, Online	1.5	N/A	39
P	Master of Applied Cyber Security - incorporating Graduate Certificate/Graduate Diploma	Ballarat, Online	2	N/A	39
P	Master of Data Science - incorporating Graduate Certificate/Graduate Diploma	Ballarat, Online	2	N/A	53
P	Master of Technology (Enterprise Systems and Business Analytics)	Ballarat, Brisbane, Online	2	N/A	39
P	Master of Technology (Software Engineering)	Ballarat, Brisbane	2	N/A	39

### NURSING, MIDWIFERY, PARAMEDICINE AND HEALTH

U	Bachelor of Nursing	Ballarat, <b>FLEX</b> Ballarat, Berwick, <b>FLEX</b> Berwick, Gippsland, <b>FLEX</b> Gippsland, <b>FLEX</b> East Gippsland	3	N/A	40
U	Bachelor of Nursing (Honours)	Ballarat, Berwick, Gippsland	1	N/A	40
U	Bachelor of Nursing/Bachelor of Midwifery	Gippsland	4	70	40
U	Bachelor of Occupational Therapy (Honours)	Gippsland	4	70	41
U	Bachelor of Physiotherapy	Gippsland	4	80	41
U	Bachelor of Physiotherapy (Honours)	Gippsland	2	N/A	41
U	*Bachelor of Speech Pathology (Honours)	Ballarat, <b>FLEX</b> Ballarat, Gippsland, <b>FLEX</b> Gippsland	4	70	41
P	Master of Health (Advanced Nursing) - incorporating Graduate Certificate	Online	2	N/A	41
P	Graduate Diploma of Health (Workplace Health and Safety)	<b>FLEX</b> Ballarat	2	N/A	42
P	Graduate Diploma of Midwifery	Ballarat, Gippsland	1	N/A	42
P	Graduate Diploma of Paramedicine	Ballarat	1	N/A	42
P	Master of Health (Health Leadership)	Online	2	N/A	42
P	Master of Health (Research Practice)	Online	2	N/A	42
P	Master of Health (Neonatal Care) - incorporating Graduate Diploma	<b>FLEX</b> Ballarat, <b>FLEX</b> Gippsland	2	N/A	43
P	Master of Health (Mental Health Nursing) - incorporating Graduate Certificate	Online	2	N/A	43
P	Master of Health (Child and Family Health)	<b>FLEX</b> Berwick	2	N/A	43
P	Master of Health (Perinatal and Infant Mental Health) - incorporating Graduate Certificate/Graduate Diploma	<b>FLEX</b> Ballarat, <b>FLEX</b> Gippsland	2	N/A	43
P	Master of Health (Workplace Health and Safety) - incorporating graduate diploma/graduate certificate	<b>FLEX</b> Ballarat	3	N/A	43
P	Master of Health (Health Services Management) - incorporating Graduate Certificate	Online	2	N/A	43
P	Master of Public Health - incorporating Graduate Diploma/Graduate Certificate	Online	2	N/A	43
P	*Master of Speech Pathology	Ballarat, <b>FLEX</b> Ballarat, Gippsland, <b>FLEX</b> Gippsland	2	N/A	43





STUDY TYPE		CAMPUS	DURATION (YEARS)	GUARANTEED ATAR	PAGE
<b>PERFORMING ARTS, VISUAL ARTS</b>					
U	Bachelor of Visual Arts	Ballarat, Gippsland	3	N/A	44
U	Bachelor of Performing Arts	Ballarat	3	N/A	44
U	Bachelor of Arts (Creative Arts) (Honours)	Ballarat, Gippsland	1	N/A	44
<b>PSYCHOLOGY</b>					
U	Bachelor of Psychological Science	Ballarat, Berwick, Gippsland	3	50	48
U	Bachelor of Psychological Science (Honours)	Ballarat, Berwick, Gippsland	1	N/A	48
P	Graduate Certificate in Human Behaviour and Counselling	Online	1PT	N/A	49
P	Master of Professional Psychology	Ballarat	1	N/A	49
P	Master of Psychology (Clinical)	Ballarat	2	N/A	49
<b>SCIENCE</b>					
U	Bachelor of Biomedical Science	Ballarat, Berwick, Gippsland, Online	3	60	50
U	Bachelor of Biotechnology	Ballarat, Gippsland, Online	3	60	50
U	Bachelor of Environmental and Conservation Science	Ballarat, Berwick, Gippsland, Online	3	60	50
U	Bachelor of Science	Ballarat, Berwick, Gippsland, Online	3	60	52
U	Bachelor of Science (Advanced)	Ballarat, Berwick, Gippsland, Online	3	N/A	52
U	Bachelor of Science (Honours)	Ballarat, Berwick, Gippsland	1	N/A	52
U	Bachelor of Veterinary and Wildlife Science	Ballarat, Berwick, Gippsland, Online	3	60	52
U	Bachelor of Geoscience	Ballarat	3	60	53
U	Bachelor of Mathematical Science	Ballarat, Online	3	60	53
P	Graduate Certificate in Brewing	Ballarat	2	N/A	53
P	Master of Data Science - incorporating Graduate Certificate/Graduate Diploma	Ballarat, Online	2	N/A	53
<b>SPORT, HEALTH, PHYSICAL AND OUTDOOR EDUCATION</b>					
U	Undergraduate Certificate in Principles of Health Promotion	Online	0.5	N/A	54
U	Undergraduate Certificate in Sport, Physical and Outdoor Education	Online	0.5	N/A	54
U	Diploma of University Studies (Sport, Physical and Outdoor Education)	Ballarat, Gippsland	1.5	N/A	55
U	*Bachelor of Secondary Education (Health and Physical Education Teaching)	Ballarat, Berwick, Gippsland	4	70	55
U	Bachelor of Outdoor and Environmental Education	Ballarat, Gippsland	3	50	55
U	Bachelor of Sport, Physical and Outdoor Education	Ballarat, Gippsland	3	50	55
U	Bachelor of Exercise and Sport Science	Ballarat, <sup>FLEX</sup> Gippsland	3	50	56
U	Bachelor of Exercise and Sport Science (Honours)	Ballarat	1	N/A	56
U	Bachelor of International Sport Management	Online	3	60	56
U	Bachelor of Sport Management (Honours)	Ballarat	1	N/A	56
U	Bachelor of Health Sciences (Health Promotion)	Ballarat, Gippsland	3	60	56
U	Bachelor of Health Sciences (Honours)	Ballarat	1	N/A	57
P	Master of Clinical Exercise Physiology	Ballarat	1.5	N/A	57
P	Master of Strength and Conditioning (by Coursework)	Ballarat	1.5	N/A	57
<b>HIGHER DEGREES</b>					
P	Higher degrees				58

#### STUDY LEVEL

U Undergraduate bachelor degree  
P Postgraduate studies  
PC Pathway Course

#### LOCATION

<sup>FLEX</sup> Flexible delivery is a blend of online study with regular, scheduled on-campus classes.

#### DURATION

PT Part-time study

#### GUARANTEED ATAR

See definition on p 61  
N/A Not applicable

#### DISCLAIMERS

\* Proposed course only.  
Subject to Federation's course accreditation processes.

# Pathway courses

## A different approach to your dream career

We offer foundation, TAFE, undergraduate, postgraduate and research courses. Though we're all about next level education, Federation has a number of pathway programs for people who haven't completed Year 12 or have no work experience.

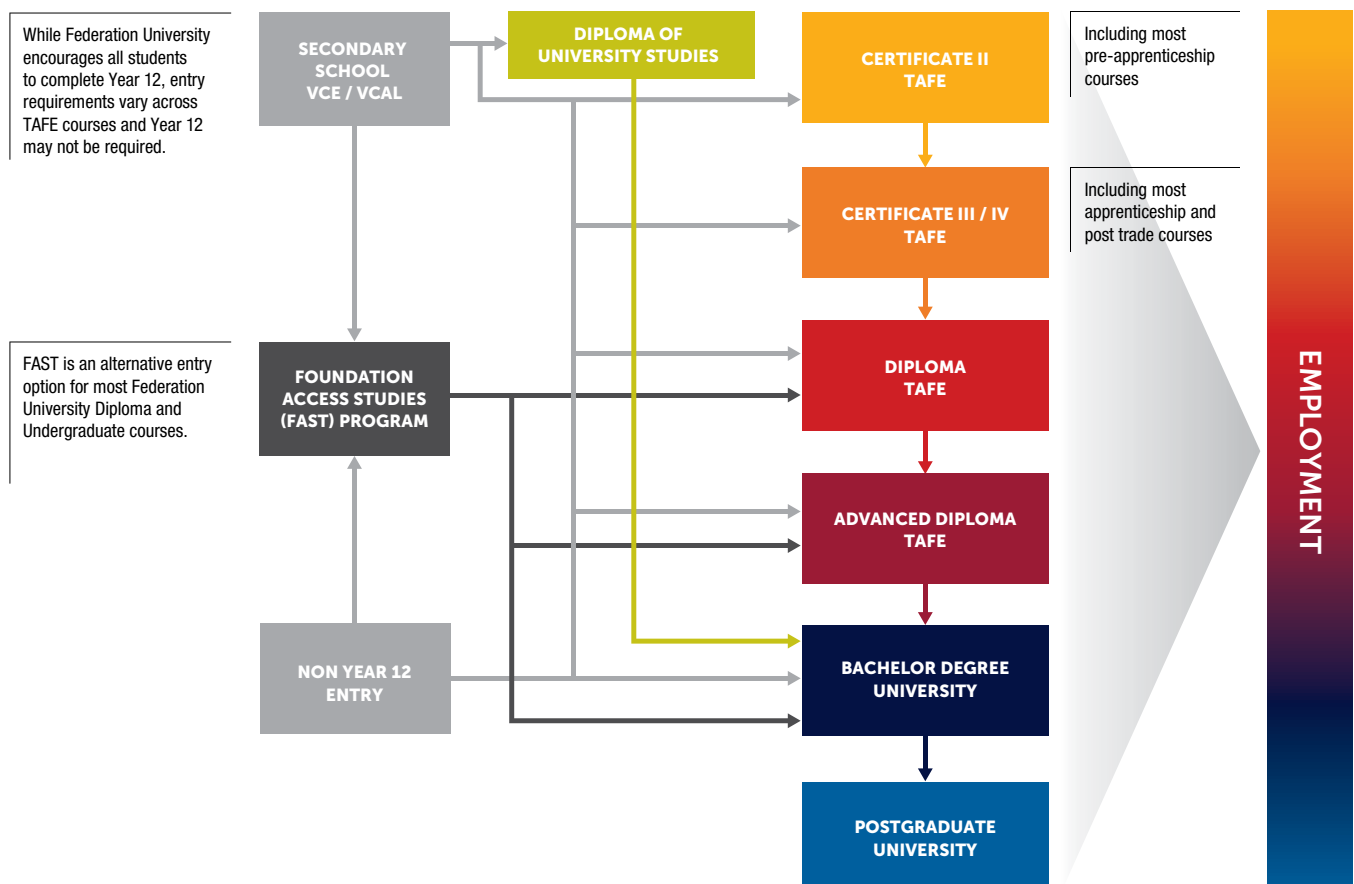
### Foundation Access Studies (FAST) Program

FAST provides a pathway to a degree if you feel you don't have the study skills, even after Year 12 completion. Learn how to write for academic purposes, research, use university systems and apply these skills to your study in order to undertake a Federation degree. FAST also offers an Introduction to Technical Maths elective course. Successful completion of this course satisfies the entry requirements to apply for an Engineering or Mathematics degree with us. Students requiring additional English Language support may be interested in the FAST (English for Academic Purposes) course. When you successfully complete FAST you are guaranteed a place in one of our undergraduate degrees.

<b>LOCATION</b> Ballarat, Berwick, Gippsland, Online	<b>DURATION</b> 0.5 years	<b>ATAR</b> Not required	<b>APPLICATION</b> VTAC / Direct
<b>ENTRY REQUIREMENTS</b> Units 1 and 2: satisfactory completion in two units (any study combination) of Maths: General Mathematics or Maths: Mathematical Methods or Units 3 and 4: any Mathematics; Units 3 and 4: a study score of at least 18 in any English.			
<b>ENTRY REQUIREMENTS (NON-YEAR 12)</b> Higher Education, VET and/or Work/Life Experience		<b>ESSENTIAL REQUIREMENTS</b> Personal Statement. See <a href="http://study.federation.edu.au">study.federation.edu.au</a>	

Education; Engineering; Information Technology; and Sport and Outdoor Education pathway courses exist as part of the **Diploma of University Studies**. For further information view the relevant area of study in this publication.

## Admission pathways







### Are you eligible for credit?

Having completed a TAFE program, you may be eligible for credit into a degree within a similar field of study. Below is a list of some of our more popular pathways, and an indication of likely credit.

[federation.edu.au/tafe-to-uni](https://www.federation.edu.au/tafe-to-uni)

TAFE QUALIFICATION / DEGREE	DEGREE	POSSIBLE CREDIT PERIOD
Diploma of Community Services (CHC52015) Diploma of Diploma of Mental Health (CHC53215) Diploma of Youth Work (CHC50413) Diploma of Alcohol and Other Drugs (CHC53215)	> Bachelor of Community and Human Services	Up to 12 months
Diploma of Justice (22320VIC) Advanced Diploma of Justice (22321VIC)	> Bachelor of Criminology and Criminal Justice	Up to 12 months Up to 18 months
Diploma of Early Childhood Education and Care (CHC50113)  Bachelor of Education Studies	> Bachelor of Education (Early Childhood and Primary) > Bachelor of Education (Early Childhood Education) > After 1st year, possible transfer into 2nd year of teaching degrees	Up to 105 credit points (of 480)  Up to 12 months
Diploma of Professional Writing and Editing (22091VIC)	> Bachelor of Arts	Up to 12 months
Diploma of Nursing (HLT54115)	> Bachelor of Nursing	12 months
Certificate IV in Nursing (HLT43407)	> Bachelor of Nursing	Up to 6 months
Certificate IV in Allied Health Assistance (HLT43015)	> Bachelor of Occupational Therapy (Honours)	*Nil
Diploma of Remedial Massage (HLT52015)	> Bachelor of Occupational Therapy (Honours), > Bachelor of Physiotherapy	*Nil
Diploma of Digital Media Technologies (ICT50915) Diploma of Information Technology (ICT50115)	> Bachelor of Information Technology > *Bachelor of Information Technology (Professional Practice) > Bachelor of Information Technology (Big Data and Analytics) > Bachelor of Information Technology (Business Information Systems) > Bachelor of Information Technology (Cloud and Enterprise Computing) > Bachelor of Information Technology (Networking and Security) > Bachelor of Information Technology (Software Development) > Bachelor of Information Technology (Games Development)	Up to 120 credit points (of 360)
Diploma of Conservation and Land Management (AHC51116)	> Bachelor of Environmental and Conservation Science	Up to 12 months
Diploma of Engineering (Technical) (MEM50212)	> Bachelor of Engineering (Mechanical) (Honours) > Bachelor of Engineering (Mining) (Honours) > Bachelor of Engineering (Civil) (Honours) > Bachelor of Engineering (Mechatronics and Robotics Engineering) (Honours) > Bachelor of Engineering (Electrical and Information Engineering) (Honours)	Up to 12 months
Diploma of Business (BSB50215) Diploma of Business Administration (BSB50415) Diploma/Adv. Diploma of Leadership and Management (BSB51915/BSB61015) Diploma of Accounting (FNS50217) Diploma of Project Management (BSB51415) Advanced Diploma of Management (HR) (BSB60915) Bachelor of Applied Management	> Bachelor of Business > Bachelor of Business (Human Resource Management) > Bachelor of Business (Management) > Bachelor of Business (Marketing) > Bachelor of Professional Accounting	Up to 12 months  Up to 2 years
Diploma of Sport (SIS50319) Diploma of Business (BSB50215)	> *Bachelor of Exercise & Sport Science > *Bachelor of Outdoor & Environmental Education > *Bachelor of Sport, Physical & Outdoor Education > Bachelor of Health Science (Health Promotion) > Bachelor of Business	Up to 30 credit points  Up to 12 months

\*Keep in mind that while completion of a certificate-level program may not earn credit towards a degree, in many cases a TAFE certificate may satisfy entry requirements. Visit our Course Finder for all entry requirements into your degree. [study.federation.edu.au](https://www.study.federation.edu.au)





Federation TAFE can be the direct pathway into the career of your dreams – or just the start of your post-secondary education.

We've been providing vocational education to Western Victoria for 150 years and offer a full range of TAFE programs, from single day short courses and 12 week skills focused pre-apprenticeships, to full apprenticeships and traineeships, and full time study based courses.

## Why Federation TAFE?

### Great teachers

You'll be learning from some of the best in their field. Our teachers have come from across industry including the trades, early childhood and community services, disability and education support, information technology, design, business, beauty and health. They know what it is like starting out and how to get ahead.

### Great facilities

Our Building and Construction Training Centre and Manufacturing and Engineering Skills Centre have been designed to replicate trade industry environments and help our TAFE students meet the challenges of the workplace head on. From drainage sandpits to circuitry, every trade has its own specialised training space. There's also a hairdressing and beauty salon, commercial kitchens, training restaurant and automotive workshops.

### Great connections

Thanks to our experienced teachers and long-standing relationships in the trade training business, we've built strong links with local industries and businesses. Like so many others before you, this makes your chances of turning your pre-apprenticeship into an apprenticeship much higher.

For information on all TAFE courses visit [federation.edu.au/tafe](https://www.federation.edu.au/tafe)

KEY STUDY OPTIONS				
AREA OF STUDY	PRE-APPRENTICESHIPS	APPRENTICESHIPS	TRAINEESHIPS	NON-TRADE STUDY OPTIONS
Agriculture, horticulture and conservation	★	★	★	★
Automotive	★	★	★	
Building and construction (Architectural technologies, carpentry, joinery, cabinet making, construction, electrotechnology, plumbing)	★	★	★	★
Business, IT and graphic design			★	★
Community and children's services			★	★
Education training				★
Engineering and manufacturing	★	★	★	★
Hospitality and Food (Cookery, patisserie, front of house, food science)	★	★		★
Hairdressing and beauty therapy	★	★	★	★
Nursing			★	★

TAFE Diploma and Advanced Diploma pathways exist with credit  
(see Pathways/alternate entry information for each course at [study.federation.edu.au](https://www.study.federation.edu.au))

# Business

## Bachelor of Applied Management

This innovative degree is designed to turn your Diploma and Advanced Diploma into an undergraduate degree with just one extra year of full time study. You'll consolidate your people, project and resource management skills with the key knowledge needed to take a business to the next level. Career opportunities include General Manager, Operations Manager, Project Manager and Supervisor.

<b>LOCATION</b> Online	<b>DURATION</b> 1 year	<b>ATAR</b> Not required	<b>APPLICATION</b> Direct
<b>ENTRY REQUIREMENTS (NON-YEAR 12)</b> Higher Education, VET and/or Work/Life Experience		<b>ESSENTIAL REQUIREMENTS</b> Applied Degree Workplace Experience portfolio in addition to submitting online application. See <a href="http://study.federation.edu.au">study.federation.edu.au</a>	
<b>PROFESSIONAL RECOGNITION</b> Varied			

## \*Bachelor of Cognitive Enterprise

Designed in collaboration with IBM, the Bachelor of Cognitive Enterprise is a degree of the future. You will learn how disruptive technologies such as Blockchain and Artificial Intelligence (AI) contribute to the digital transformation of organisations. You will be job-ready by earning IBM Digital Badges (certifications) in Blockchain and AI and by gaining valuable experience through our work integrated learning program. This course will give you the confidence to start your career as a business analyst, systems analyst, digital transformation consultant, technology manager, change management consultant or digital business strategist.

<b>LOCATION</b> Ballarat, Berwick, Brisbane, Gippsland, Online			
<b>DURATION</b> 3 years	<b>GUARANTEED ATAR</b> 50		<b>APPLICATION</b> VTAC / Direct
<b>ENTRY REQUIREMENTS</b> Units 3 and 4: a study score of at least 20 in any English		<b>ENTRY REQUIREMENTS (NON-YEAR 12)</b> Higher Education, VET and/or Work/Life Experience	

## \*Bachelor of Cognitive Enterprise (Professional Practice)

Designed in collaboration with IBM, the Bachelor of Cognitive Enterprise is a degree of the future. You will learn how disruptive technologies such as Blockchain and Artificial Intelligence (AI) contribute to the digital transformation of organisations. This four-year degree will see you job-ready by earning IBM Digital Badges (certifications) in Blockchain and AI and undertaking a professional practice year. This course will give you the confidence to start your career as a business analyst, systems analyst, digital transformation consultant, technology manager, change management consultant or digital business strategist.

<b>LOCATION</b> Ballarat, Berwick, Brisbane, Gippsland, Online			
<b>DURATION</b> 4 years	<b>GUARANTEED ATAR</b> N/A		<b>APPLICATION</b> VTAC / Direct
<b>ENTRY REQUIREMENTS</b> Units 3 and 4: a study score of at least 20 in any English		<b>ENTRY REQUIREMENTS (NON-YEAR 12)</b> Higher Education, VET and/or Work/Life Experience	





### \*Bachelor of Business (Human Resource Management)

Learn how to manage people and develop organisations to work together for the benefit of both. You'll study areas like equal employment opportunity, employment safety and labour relations. We'll also help you to develop confidence, negotiating, and communication skills, and the legal foundations important in business. Once you graduate, you can work across recruitment, staff training and workplace development in start-ups, global companies, government departments or consult.

LOCATION		
Ballarat, Berwick, Gippsland, Online		
DURATION	GUARANTEED ATAR	APPLICATION
3 years	50	VTAC / Direct
ENTRY REQUIREMENTS		
Units 3 and 4: a study score of at least 20 in any English		
ENTRY REQUIREMENTS (NON-YEAR 12)		
Higher Education, VET and/or Work/Life Experience		

\*Proposed course only. Subject to Federation's course accreditation processes.

### Bachelor of Business (Management)

Develop leadership and problem-solving skills and learn how to apply contemporary management practices to an organisation or even your own business. A double major in Marketing or Human Resource Management is available. When you graduate, you'll be ready to enter the corporate world, whether it's in human resources, business development or project management as a business owner or manager.

LOCATION		
Ballarat, Berwick, Brisbane, Gippsland, Online		
DURATION	GUARANTEED ATAR	APPLICATION
3 years	50	VTAC / Direct
ENTRY REQUIREMENTS		
Units 3 and 4: a study score of at least 20 in any English		
ENTRY REQUIREMENTS (NON-YEAR 12)		
Higher Education, VET and/or Work/Life Experience		

### Bachelor of Business (Marketing)

Become a marketing expert, while learning important business skills like accounting, human resource management and management. A double major in Management or Human Resource Management is available. Become a director or manager in digital marketing, branding, events, projects, research or communications.

LOCATION		
Ballarat, Berwick, Brisbane, Gippsland, Online		
DURATION	GUARANTEED ATAR	APPLICATION
3 years	50	VTAC / Direct
ENTRY REQUIREMENTS		
Units 3 and 4: a study score of at least 20 in any English		
ENTRY REQUIREMENTS (NON-YEAR 12)		
Higher Education, VET and/or Work/Life Experience		

### Bachelor of Business

Create a custom degree that will launch your career in business. You can major in marketing, management, human resource management and even complete a double major. Our Work Integrated Learning Program will ensure you are work-ready through paid placement, internships, overseas exchange, class practice or a project. Career opportunities include marketing, research, strategic planning, business owner, human resources, procurement, operations, startups, international trade, consulting and management.

LOCATION		
Ballarat, Berwick, Brisbane, Gippsland		
DURATION	GUARANTEED ATAR	APPLICATION
3 years	50	VTAC / Direct
ENTRY REQUIREMENTS		
Units 3 and 4: a study score of at least 20 in any English		
ENTRY REQUIREMENTS (NON-YEAR 12)		
Higher Education, VET and/or Work/Life Experience		

**GUARANTEED ATAR** See definition on p 61

"Choosing Federation University was a fantastic decision. The lecturers were very supportive and really wanted us to succeed. They were always available if I had any questions. My degree gave me the skills to work more effectively, and it was professionally accredited, so it made me eligible to enter the CPA and CA in Australia and New Zealand. Since graduating and returning home, I've been working as an accountant and built strong connections between my firm and Australian companies and clients."

**Soimali Fernandes**

Master of Professional Accounting





## Bachelor of Commerce (Economics and Finance)

Grow wealth, manage investments and give financial advice. Our double-major, combined with our work placement, makes you more employable in the competitive corporate world. With our economics and finance degree, you can work in banking, insurance, investments, stockbroking, corporate finance and more.

<b>LOCATION</b> Ballarat, Gippsland	<b>DURATION</b> 3 years	<b>GUARANTEED ATAR</b> 50	<b>APPLICATION</b> VTAC / Direct
<b>ENTRY REQUIREMENTS</b> Units 3 and 4: a study score of at least 20 in any English.			
<b>ENTRY REQUIREMENTS (NON-YEAR 12)</b> Higher Education, VET and/or Work/Life Experience			
<b>PROFESSIONAL RECOGNITION</b> CPA Australia, Chartered Accountants Australia and New Zealand			

## Bachelor of Professional Accounting

This comprehensive course is designed for people with an aptitude for numbers and desire to forge a professional accounting career. You will have the opportunity to undertake a practical placement, internship or project, making you more employable in the marketplace.

<b>LOCATION</b> Ballarat, Berwick, Gippsland, Online		
<b>DURATION</b> 3 years	<b>GUARANTEED ATAR</b> 50	<b>APPLICATION</b> VTAC / Direct
<b>ENTRY REQUIREMENTS</b> Units 3 and 4: a study score of at least 20 in any English.		
<b>ENTRY REQUIREMENTS (NON-YEAR 12)</b> Higher Education, VET and/or Work/Life Experience		

## Master of Business Administration

Designed for small business owners, entrepreneurs, leaders and those with the innate drive to rise up the ladder, this course gives you the competitive edge. Federation University lecturers and facilitators from Runway, a regional startup incubator, will lead workshops on innovation, network building and startup thinking. Also available as a graduate diploma and graduate certificate.

<b>LOCATION</b> Ballarat, Brisbane, Gippsland		
<b>DURATION</b> 1.5 years accelerated	<b>ATAR</b> Not required	<b>APPLICATION</b> Direct
<b>ENTRY REQUIREMENTS (NON-YEAR 12)</b> See <a href="http://study.federation.edu.au">study.federation.edu.au</a>		

## Master of Business Administration (International Business)

Study the Master of Business Administration (International Business) to become a world business leader. You'll develop the skills and specialist knowledge to be a manager within a multitude of areas, including leadership, policy, practice and evidence based delivery. If you are currently working in business or aspiring to a management position, this is for you.

<b>LOCATION</b> Ballarat, Brisbane	<b>DURATION</b> 2 years	<b>ATAR</b> Not required	<b>APPLICATION</b> Direct
<b>ENTRY REQUIREMENTS (NON-YEAR 12)</b> See <a href="http://study.federation.edu.au">study.federation.edu.au</a>			

## Master of Professional Accounting

The Master of Professional Accounting (MPA) has been designed for students whose first degree is in a non-accounting field and provides you with a comprehensive course of study in accounting theory and practice that is recognised by both CPA Australia and Chartered Accountants Australia and New Zealand, enabling you to pursue a pathway to qualification as a professional accountant. Also available as a graduate certificate and graduate diploma.

<b>LOCATION</b> Berwick, Online		
<b>DURATION</b> 2 years	<b>ATAR</b> Not required	<b>APPLICATION</b> Direct
<b>ENTRY REQUIREMENTS (NON-YEAR 12)</b> See <a href="http://study.federation.edu.au">study.federation.edu.au</a>		
<b>PROFESSIONAL RECOGNITION</b> CPA Australia, Chartered Accountants Australia and New Zealand		

"When I was in Year 11, I attended many university Open Days including an excellent marketing session with a Business lecturer at Federation University. When I attended the Open Day again in Year 12, the lecturer remembered me. Right then, I saw the advantage of the smaller class sizes. I thought if you can remember me now, this is how it will be when I'm actually a student there."

**Nick Mann**

Bachelor of Business (Marketing)



# Education and Early Childhood

## \*Undergraduate Certificate in Education Studies

This certificate is designed for those who didn't meet entry requirements to begin a teaching degree. After successful completion you may pathway to our Bachelor of Education Studies degree with six months credit and start your journey towards a rewarding career in teaching.

LOCATION	DURATION	ATAR	APPLICATION
Online	0.5 years	Not required	Direct
<b>ENTRY REQUIREMENTS</b> Successful completion of a year 12 qualification (VCE/VCAL/interstate or overseas equivalent).			
<b>ENTRY REQUIREMENTS (NON-YEAR 12)</b> Higher Education, VET and/or Work/Life Experience			

## \*Undergraduate Certificate in Vocational Education and Training

This course will introduce you to working in the vocational education and training sector. On successful completion you have the opportunity to pathway into our Associate Degree of Vocational Education and Training course (depending on prior qualifications) with substantial credit, to become a fully qualified VET teacher.

LOCATION	DURATION	ATAR	APPLICATION
Online	0.5 years	Not required	Direct
<b>ENTRY REQUIREMENTS</b> Students require a Certificate IV in Training and Assessment, or experience in a training/teaching role; and at least 4 years' (full-time equivalent) working experience in non-educational workplaces.			
<b>ENTRY REQUIREMENTS (NON-YEAR 12)</b> Higher Education, VET and/or Work/Life Experience			

## Diploma of University Studies (Education)

Follow a pathway to become a teacher, without the entry requirements after completing VCE, as a mature student, or if you are now considering going to university after completing VCAL or an unscored VCE. Step from the Diploma into the second year of the degree, subject to attaining a satisfactory academic standard. Studies include academic writing, mathematical skills and developing an understanding of the university learning environment. Embark on your teaching career with skills and confidence.

LOCATION	DURATION	ATAR	APPLICATION
Ballarat, Berwick, Gippsland	1.5 years	Not required	VTAC / Direct
<b>ENTRY REQUIREMENTS</b> Units 1 and 2: satisfactory completion in two units (any study combination) of any Mathematics or Units 3 and 4: any Mathematics; Units 3 and 4: a study score of at least 18 in any English.			
<b>ENTRY REQUIREMENTS (NON-YEAR 12)</b> Higher Education, VET and/or Work/Life Experience			

## Associate Degree of Vocational Education and Training

This qualification is for teachers and trainers within the vocational education and training sector, in TAFE, Registered Training Organisations, industry or adult education settings; or for people wishing to work in such settings. The course equips VET teachers and trainers with high-level skills and knowledge to handle the challenges of industry engagement, new modes of learning and a changing VET environment.

LOCATION	DURATION	ATAR	APPLICATION
Online	Up to 2 years	Not required	Direct
<b>ENTRY REQUIREMENTS</b> Certificate IV in Training and Assessment, 4 years experience, industry qualification of Certificate III or above.			





### Graduate Certificate in Education (Tertiary Education)

This course produces contemporary learning and teaching practices to complement your industry and/or research expertise. The intended learning outcomes of the GCETE are framed within the seven criteria of the Australian University Teaching Criteria and Standards Framework. The content provides a foundation on which to develop quality pedagogies, in a range of tertiary teaching environments, supported by evidence, research and scholarly practice.

LOCATION	DURATION	ATAR	APPLICATION
Online	0.5 year	Not required	Direct
<b>ENTRY REQUIREMENTS (NON-YEAR 12)</b> See <a href="http://study.federation.edu.au">study.federation.edu.au</a>			

### \*Bachelor of Secondary Education

Prepare for a rewarding career as a secondary school teacher with the flexibility to teach from Year 7 through to VCE. We'll help you become an engaging, motivating and innovative secondary school teacher. You'll choose two specialisations from a range of teaching areas that will develop your content knowledge needed to successfully teach in those areas. You'll be ready to teach by undertaking a minimum of 80 days of supervised teaching placement throughout the course.

<b>LOCATION</b> Ballarat, Berwick, Gippsland		
<b>DURATION</b> 4 years	<b>GUARANTEED ATAR</b> 70	<b>APPLICATION</b> VTAC / Direct
<b>ENTRY REQUIREMENTS</b> Units 1 and 2: satisfactory completion in two units (any study combination) of Maths: General Mathematics, Maths: Mathematical Methods or Maths: Specialist Mathematics or Units 3 and 4: any Mathematics; Units 3 and 4: a study score of at least 30 in English (EAL) or at least 25 in English other than EAL.		
<b>ENTRY REQUIREMENTS (NON-YEAR 12)</b> Higher Education, VET and/or Work/Life Experience	<b>ESSENTIAL REQUIREMENTS</b> Working with Children (WWC), Police record check. See <a href="http://study.federation.edu.au">study.federation.edu.au</a>	
<b>PROFESSIONAL RECOGNITION</b> Victorian Institute of Teachers (VIT)		

\*Proposed course only. Subject to Federation's course accreditation processes.

### Bachelor of Education (Early Childhood Education)

Become a confident kindergarten teacher with Federation University. You may be working in the early childhood field and want to upskill, straight out of school or changing careers. Our students undertake 80 days of supervised teaching placement and can participate in voluntary overseas placements. A range of scholarships are also available to help support your dream of an early childhood career.

<b>LOCATION</b> Ballarat, Berwick, <sup>Flex</sup> Gippsland, <sup>Flex</sup> Wimmera, Online		
<b>DURATION</b> 4 years	<b>GUARANTEED ATAR</b> 55	<b>APPLICATION</b> VTAC / Direct
<b>ENTRY REQUIREMENTS</b> Units 3 and 4: a study score of at least 20 in any English and Units 1 and 2: satisfactory completion in two units (any study combination) of any Mathematics or Units 3 and 4: any Mathematics.	<b>ENTRY REQUIREMENTS (NON-YEAR 12)</b> Higher Education, VET and/or Work/Life Experience	
	<b>ESSENTIAL REQUIREMENTS</b> Working with Children (WWC), Police record check. See <a href="http://study.federation.edu.au">study.federation.edu.au</a>	
<b>PROFESSIONAL RECOGNITION</b> Victorian Institute of Teachers (VIT): ACECQA.		

**Flex** Flexible delivery is a blend of online study with regular, scheduled on-campus classes.

### Bachelor of Education (Early Childhood and Primary)

Gain the skills and knowledge to be a confident teacher from pre-school through to Year 6. Learn exactly what type of teacher you are and how to use your unique skills - you may choose to work with children with disabilities or support those who are disengaged with learning. You will undertake 110 days of supervised teaching placement in both early childhood and primary settings. In addition you may participate in voluntary overseas placements in locations such as Timor Leste, England, China, New Zealand and Nepal.

<b>LOCATION</b> Ballarat, Berwick, Gippsland, Online		
<b>DURATION</b> 4 years	<b>GUARANTEED ATAR</b> 70	<b>APPLICATION</b> VTAC / Direct
<b>ENTRY REQUIREMENTS</b> Units 1 and 2: satisfactory completion in two units (any study combination) of Maths: General Mathematics, Maths: Mathematical Methods or Maths: Specialist Mathematics or Units 3 and 4: any Mathematics; Units 3 and 4: a study score of at least 30 in English (EAL) or at least 25 in English other than EAL.	<b>ENTRY REQUIREMENTS (NON-YEAR 12)</b> Higher Education, VET and/or Work/Life Experience	
<b>ESSENTIAL REQUIREMENTS</b> Working with Children (WWC), Police record check. See <a href="http://study.federation.edu.au">study.federation.edu.au</a>		
<b>PROFESSIONAL RECOGNITION</b> Australian Institute of Teaching and School Leadership (AITSL); Australian Children's Education and Care Quality Authority (ACECQA); VIT		

## Bachelor of Education (Primary)

Learn how to engage children in innovative and purposeful learning. Along with the compulsory education courses, select primary specialisation from: Maths, Science, English and Inclusive Education with a focus on English, Science or Mathematics. You will complete a minimum of 80 days of supervised teaching practice during the four years of your degree and be qualified to teach primary students up to Year 6.

LOCATION	DURATION	GUARANTEED ATAR	APPLICATION
Ballarat, Berwick, Gippsland	4 years	70	VTAC / Direct
<b>ENTRY REQUIREMENTS</b>			
Units 1 and 2: satisfactory completion in two units (any study combination) of Maths: General Mathematics, Maths: Mathematical Methods or Maths: Specialist Mathematics or Units 3 and 4: any Mathematics; Units 3 and 4: a study score of at least 30 in English (EAL) or at least 25 in English other than EAL.			
<b>ENTRY REQUIREMENTS (NON-YEAR 12)</b>		<b>ESSENTIAL REQUIREMENTS</b>	
Higher Education, VET and/or Work/Life Experience		Working with Children (WWC), Police record check. See <a href="http://study.federation.edu.au">study.federation.edu.au</a>	
<b>PROFESSIONAL RECOGNITION</b>			
Victorian Institute of Teachers (VIT)			

## Bachelor of Education Studies

If you did not meet the entry requirements to commence a teaching degree, this course is for you. At the completion of first year, you may be eligible to apply for a transfer into the second year of a Federation teaching degree. This means that you may still qualify as a VIT registered teacher within 4 years of study. Otherwise continue this course and qualify to work in many roles as an Education Officer, Project Officer or Education Support Officer (Integration Aide) working to support students within a school setting.

LOCATION	DURATION	GUARANTEED ATAR	APPLICATION
Ballarat, Berwick, Gippsland	3 years	50	VTAC / Direct
<b>ENTRY REQUIREMENTS</b>		<b>ENTRY REQUIREMENTS (NON-YEAR 12)</b>	
Units 1 and 2: satisfactory completion in two units (any study combination) of any Mathematics or Units 3 and 4: any Mathematics; Units 3 and 4: a study score of at least 20 in any English.		Higher Education, VET and/or Work/Life Experience	
		<b>ESSENTIAL REQUIREMENTS</b>	
		Working with Children (WWC), Police record check. See study.federation.edu.au	

## Graduate Certificate in Specialist Teaching

Choose from the following majors: Inclusive Education, Literacy, Mathematics Education, Science Education and TESOL. On completion, you may choose to pathway to our Master of Specialist Teaching.

LOCATION	DURATION	ATAR	APPLICATION
Online	0.5 year	Not required	Direct
<b>ENTRY REQUIREMENTS</b>		<b>ESSENTIAL REQUIREMENTS</b>	
Higher Education, VET and/or Work/Life Experience		See study.federation.edu.au	

## Graduate Diploma in Education Studies

This course explores teaching and learning in local and global contexts, the purpose of education, feedback, assessment and reporting, and the examination of how children and young people's learning can be supported in diverse learning settings. Also available as a graduate certificate (half year).

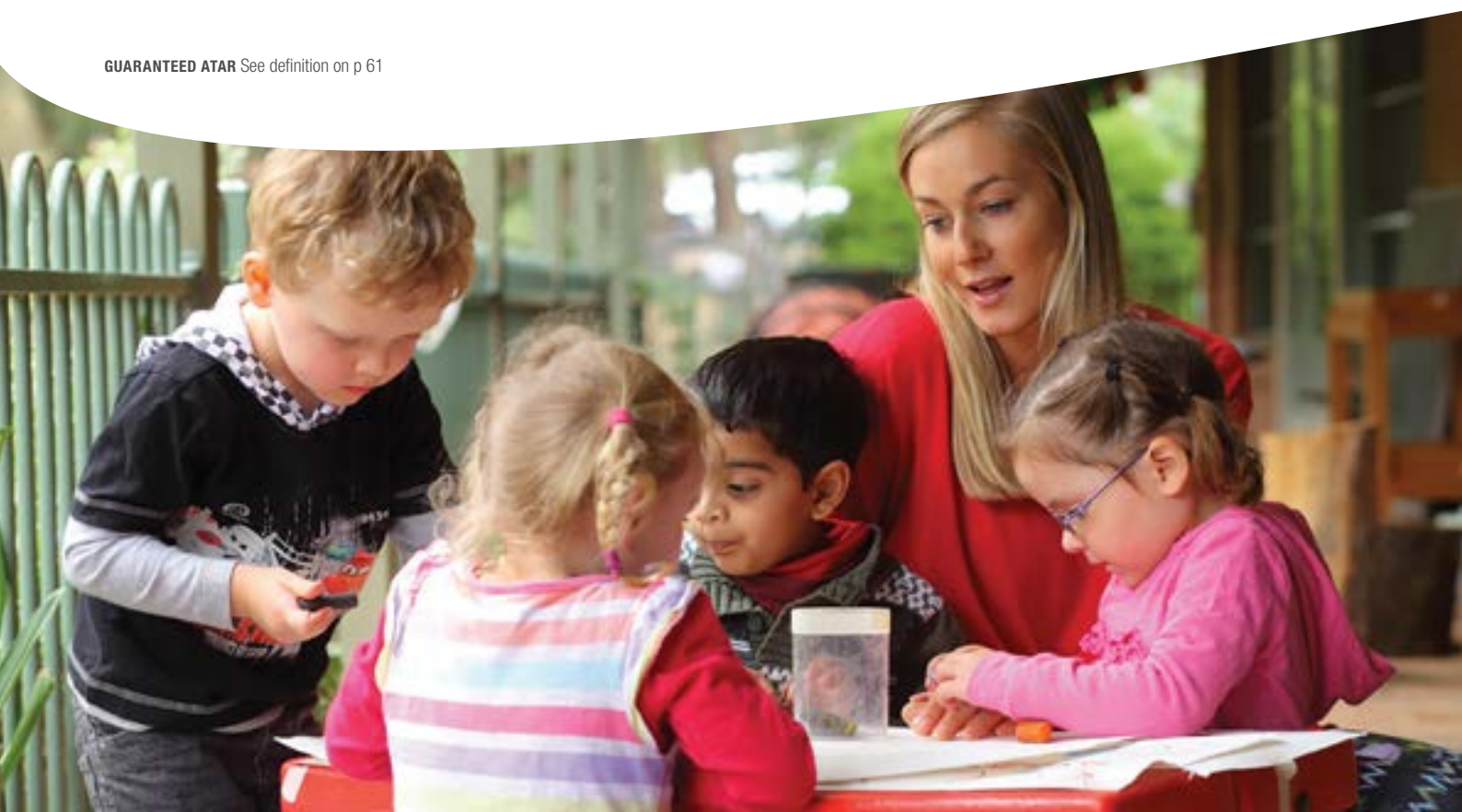
LOCATION			
Ballarat, Berwick, Gippsland, Online			
DURATION	ATAR	APPLICATION	
1 year	Not required	Direct	
<b>ENTRY REQUIREMENTS</b>		<b>ESSENTIAL REQUIREMENTS</b>	
See study.federation.edu.au		See study.federation.edu.au	

## Master of Specialist Teaching

Qualified teachers, those teaching 'out-of-field' or teachers looking to gain new specialist knowledge can increase their skills in specialist teaching areas. Build competency in cross-curricular areas of Numeracy, Literacy, STEM, TESOL and Inclusive Education. After studying four specialist subjects you will complete one specialist stream.

LOCATION	DURATION	ATAR	APPLICATION
Online	1.5 years	Not required	Direct
<b>ENTRY REQUIREMENTS</b>		<b>ESSENTIAL REQUIREMENTS</b>	
See study.federation.edu.au		See study.federation.edu.au	

**GUARANTEED ATAR** See definition on p 61





### Master of Education Studies (by Coursework)

If you're a teacher or educational professional you could be ready to lead educational practice, policy and research. Decide between a coursework pathway, where you'll focus on issues of interest related to your working life, or a research pathway\* where you'll complete a minor thesis. From there, you may even wish to continue studying for your PhD. Also available as a graduate certificate and graduate diploma.

LOCATION			
Ballarat, Berwick, Gippsland, Online			
DURATION	ATAR	APPLICATION	
2 years	Not required	Direct	
ENTRY REQUIREMENTS (NON-YEAR 12)		ESSENTIAL REQUIREMENTS	
See study.federation.edu.au		See study.federation.edu.au	

\*TAFE Diploma and Advanced Diploma pathways exist with credit  
(see Pathways/alternate entry information for each course at study.federation.edu.au)

### Master of Teaching (Early Childhood)

Build on your undergraduate degree to become a confident kindergarten teacher. If you're thinking of changing careers, now is a great time. Early childhood teachers are in high demand and a number of scholarships are available.

LOCATION	DURATION	ATAR	APPLICATION
Ballarat, Online	2 years	Not required	VTAC / Direct
ENTRY REQUIREMENTS (NON-YEAR 12)			
Bachelor degree, see study.federation.edu.au			
ESSENTIAL REQUIREMENTS			
Working with Children (WWC), Police record check. See study.federation.edu.au			

### Master of Teaching (Primary)

This postgraduate course will help you take your skills from your undergraduate degree to become a teacher. You may be looking to change your career or you've decided after finishing your undergraduate degree, that teaching is what you really want to do. You'll graduate from this degree with the confidence and skills to teach in primary schools across Australia and overseas. It's a hands-on course that gets you out into the classroom for a minimum of 60 days, where you can put what you've learnt into practice.

LOCATION	DURATION	ATAR	APPLICATION
Ballarat, Online	1.5 years accelerated	Not required	VTAC / Direct
ENTRY REQUIREMENTS (NON-YEAR 12)		ESSENTIAL REQUIREMENTS	
Bachelor degree, see study.federation.edu.au		Working with Children (WWC), Police record check. See study.federation.edu.au	
PROFESSIONAL RECOGNITION			
Victorian Institute of Teachers (VIT)			

### Master of Teaching (Secondary)

Develop the skills, understandings and dispositions for effective teaching. This coursework is linked to the Australian Graduate Teaching Standards and provides you with regular classroom observations, practitioner inquiries linked to personal goals, regular opportunities to develop core teaching practices, and the support of professional learning communities. Our course is small and people-centred, providing the ideal learning environment to become a teacher equipped to make a difference.

LOCATION	DURATION	ATAR	APPLICATION
Ballarat, Online	1.5 years accelerated	Not required	Direct
ENTRY REQUIREMENTS (NON-YEAR 12)		ESSENTIAL REQUIREMENTS	
Bachelor degree, see study.federation.edu.au		Working with Children (WWC), Police record check. See study.federation.edu.au	
PROFESSIONAL RECOGNITION			
Victorian Institute of Teachers (VIT)			



Leigh Russell, CEO of Swimming Australia, is an accomplished executive, director and elite sports leader.

She was the first woman to hold a senior executive position within an AFL club and was the youngest CEO of Netball Victoria.

"I chose to study at the university when I was a Year 12 student as I wanted to get out of Melbourne and spread my wings. I had some incredible teachers who really inspired me. As I move around in terms of work I often meet graduates who speak so fondly of their time with the university as it's a very special place. I loved my time at the university."

**Leigh Russell**  
Education graduate





# Engineering

## Diploma of University Studies (Engineering)

Whether you've finished high school, completed VCAL, or want to advance your career with additional qualifications, this foundation course is a great option for you. Study mathematics, physical sciences, computing, design and materials and fast track from the diploma into the second year of an engineering degree (specialising in Civil, Mechanical, Mining or Mechatronic and Robotics), subject to attaining a satisfactory academic standard.

LOCATION	DURATION	ATAR	APPLICATION
Ballarat, Gippsland	1.5 years	Not required	VTAC / Direct
<b>ENTRY REQUIREMENTS</b>			
Units 1 and 2: satisfactory completion in two units (any study combination) of Maths: Mathematical Methods or Maths: Specialist Mathematics or Units 3 and 4: a study score of at least 20 in any Mathematics; Units 3 and 4: a study score of at least 18 in any English.			
<b>ENTRY REQUIREMENTS (NON-YEAR 12)</b>			
Higher Education, VET and/or Work/Life Experience			

## Bachelor of Engineering (Electrical and Information Engineering) (Honours)

The degree covers key areas of the electrical, electronic and computer domains including programming, data science and artificial intelligence. Pursue a career in electrical engineering, renewable energy, power systems engineering and electronic systems.

LOCATION	DURATION	GUARANTEED ATAR	APPLICATION
Ballarat	4 years	60	VTAC / Direct
<b>ENTRY REQUIREMENTS</b>			
Units 3 and 4: study score of at least 20 in one of Maths: Mathematical Methods, or Maths: Specialist Mathematics; unit 3 and 4: a study score of at least 20 in English.			
<b>ENTRY REQUIREMENTS (NON-YEAR 12)</b>		<b>PROFESSIONAL RECOGNITION</b>	
Higher Education, VET and/or Work/Life Experience		Professional Engineer, Engineers Australia	

## Bachelor of Engineering (Civil) (Honours)

Learn to prevent flooding, design irrigation systems, and build multistoreyed buildings to ensure structures are safe, economical and environmentally sound. Seek employment in government and private organisations, specialising in civil and building engineering.

LOCATION	DURATION	GUARANTEED ATAR	APPLICATION
Ballarat, Gippsland	4 years	60	VTAC / Direct
<b>ENTRY REQUIREMENTS</b>			
Units 3 and 4: a study score of at least 20 in Maths: Mathematical Methods or at least 20 in Maths: Specialist Mathematics; Units 3 and 4: a study score of at least 20 in any English.			
<b>ENTRY REQUIREMENTS (NON-YEAR 12)</b>		<b>PROFESSIONAL RECOGNITION</b>	
Higher Education, VET and/or Work/Life Experience		Professional Engineer, Engineers Australia	



### Bachelor of Engineering (Mechanical) (Honours)

Become a professional engineer who is an expert in planning, design and management. Invent new products, design innovative machines and change the way humans interact with mechanics. Learn about electric circuits and machines, thermodynamics and industrial robots. In final year, pursue your interest area with your own unique engineering project.

LOCATION	DURATION	GUARANTEED ATAR	APPLICATION
Ballarat	4 years	60	VTAC / Direct
<b>ENTRY REQUIREMENTS</b>			
Units 3 and 4: a study score of at least 20 in Maths: Mathematical Methods or at least 20 in Maths: Specialist Mathematics; Units 3 and 4: a study score of at least 20 in any English.			
<b>ENTRY REQUIREMENTS (NON-YEAR 12)</b>		<b>PROFESSIONAL RECOGNITION</b>	
Higher Education, VET and/or Work/Life Experience		Professional Engineer, Engineers Australia	

### Bachelor of Engineering (Mining) (Honours)

Learn to mine in a sustainable and safe way, exploring mineral deposit evaluation and processing, underground production systems, mine power and services, surface mining operations and mine environment and safety. Launch your career in government and private organisations, mining companies and consulting firms.

LOCATION	DURATION	GUARANTEED ATAR	APPLICATION
Ballarat	4 years	60	VTAC / Direct
<b>ENTRY REQUIREMENTS</b>			
Units 3 and 4: a study score of at least 20 in Maths: Mathematical Methods or at least 20 in Maths: Specialist Mathematics; Units 3 and 4: a study score of at least 20 in any English.			
<b>ENTRY REQUIREMENTS (NON-YEAR 12)</b>		<b>PROFESSIONAL RECOGNITION</b>	
Higher Education, VET and/or Work/Life Experience		Professional Engineer, Engineers Australia	

### Bachelor of Engineering (Mechatronics and Robotics Engineering) (Honours)

Gain the skills necessary to plan, design and manage complex systems that integrate mechanical, electronic and computational elements of engineering. You will learn project-based skills in real world situations required for success in industry.

LOCATION	DURATION	GUARANTEED ATAR	APPLICATION
Gippsland, Online	4 years	60	VTAC / Direct
<b>ENTRY REQUIREMENTS</b>			
Units 3 and 4: a study score of at least 20 in Maths: Mathematical Methods or at least 20 in Maths: Specialist Mathematics; Units 3 and 4: a study score of at least 20 in any English.			
<b>ENTRY REQUIREMENTS (NON-YEAR 12)</b>		<b>PROFESSIONAL RECOGNITION</b>	
Higher Education, VET and/or Work/Life Experience		Professional Engineer, Engineers Australia	

### Graduate Certificate in Community Energy and Micro-Grid

Learn about the complex nature of renewable energy sources, energy storage, community microgrids, emerging technologies, and energy project management. This program will equip you with the knowledge and skills to progress your career in the energy sector.

LOCATION	DURATION	ATAR	APPLICATION
Ballarat, Online	1 year part-time	Not required	Direct
<b>ENTRY REQUIREMENTS (NON-YEAR 12)</b>		<b>ESSENTIAL REQUIREMENTS</b>	
See <a href="http://study.federation.edu.au">study.federation.edu.au</a>		See <a href="http://study.federation.edu.au">study.federation.edu.au</a>	

"I chose to study at Federation University because of the large practical component in the course. The industry exposure I gained through placement and projects was invaluable, with the wide range of leadership and volunteering opportunities really allowing me to find my passion. The staff at Federation not only teach the required knowledge but they also go above and beyond to help every student gain fulfilling work experience. These combined helped me land my dream job as a Mining Engineer at Rio Tinto."

**Ryan Marshall**

Bachelor of Engineering (Mining)



### Graduate Certificate in Maintenance Management

Gain knowledge in manufacturing processes, transport, power generation and industrial, commercial and civic building operations. Embrace leadership and management techniques, maintenance strategies and asset operations optimisation.

LOCATION	DURATION	ATAR	APPLICATION
Online	1 year part-time	Not required	Direct
<b>ENTRY REQUIREMENTS (NON-YEAR 12)</b> See <a href="http://study.federation.edu.au">study.federation.edu.au</a>		<b>PROFESSIONAL RECOGNITION</b> Continuing Professional Development, Engineers Australia	

### Graduate Certificate in Mining Operation Health and Safety

Build your knowledge to undertake professional or highly skilled work within the mining industry, such as consultancy, engineering and safety, or further training. The two study modules are Mining Systems, focusing on planning, designing and implementing surface and underground mining methods, and Workplace Health and Safety, focusing on both the physical and psychosocial work environment. Provides a pathway to the Graduate Diploma of Mining, Master of Engineering Technology (Mining) or the Master of Health (Workplace Health and Safety).

LOCATION	DURATION	ATAR	APPLICATION
Ballarat, Online	0.5 year	Not required	Direct
<b>ENTRY REQUIREMENTS (NON-YEAR 12)</b> See <a href="http://study.federation.edu.au">study.federation.edu.au</a>		<b>ESSENTIAL REQUIREMENTS</b> Additional Details Form. See <a href="http://study.federation.edu.au">study.federation.edu.au</a>	

### Graduate Certificate in Reliability Engineering

Designed primarily for the graduate engineer and delivered online, this mathematically based course covers technical aspects of engineering, focusing on reliability and availability of systems. You will study quality control, design and data analysis, as well as designing reliability into safety critical systems.

LOCATION	DURATION	ATAR	APPLICATION
Online	1 year part-time	Not required	Direct
<b>ENTRY REQUIREMENTS (NON-YEAR 12)</b> See <a href="http://study.federation.edu.au">study.federation.edu.au</a>		<b>PROFESSIONAL RECOGNITION</b> Continuing Professional Development, Engineers Australia	

### Graduate Diploma of Engineering Maintenance Management

Gain knowledge in manufacturing processes, transport, power generation and industrial, commercial and civic building operations. Embrace leadership and management techniques, maintenance strategies and asset operations optimisation.

LOCATION	DURATION	ATAR	APPLICATION
Online	2 years part-time	Not required	Direct
<b>ENTRY REQUIREMENTS (NON-YEAR 12)</b> See <a href="http://study.federation.edu.au">study.federation.edu.au</a>		<b>ESSENTIAL REQUIREMENTS</b> Additional Details Form. See <a href="http://study.federation.edu.au">study.federation.edu.au</a>	
<b>PROFESSIONAL RECOGNITION</b> Continuing Professional Development, Engineers Australia			

### Graduate Diploma of Mining

This course was created with the working engineer in mind. Study areas include engineering physics, modelling and change, mine surveying, production drilling and blasting, tunnelling and mine development.

LOCATION	DURATION	ATAR	APPLICATION
Ballarat, Online	2 years	Not required	Direct
<b>ENTRY REQUIREMENTS (NON-YEAR 12)</b> See <a href="http://study.federation.edu.au">study.federation.edu.au</a>		<b>ESSENTIAL REQUIREMENTS</b> Additional Details Form. See <a href="http://study.federation.edu.au">study.federation.edu.au</a>	

### Master of Engineering Project Management

Gain skills in project execution and resource planning. Learn more about contracts and costing, business analysis and decision making, human and financial resources, risk and research methodology. You will also undertake independent research in your final year.

<b>LOCATION</b> Ballarat	<b>DURATION</b> 2 years	<b>ATAR</b> Not required	<b>APPLICATION</b> Direct
<b>ENTRY REQUIREMENTS (NON-YEAR 12)</b> See <a href="http://study.federation.edu.au">study.federation.edu.au</a>		<b>ESSENTIAL REQUIREMENTS</b> Additional Details Form. See <a href="http://study.federation.edu.au">study.federation.edu.au</a>	
<b>PROFESSIONAL RECOGNITION</b> Continuing Professional Development, Engineers Australia			



### Master of Engineering Technology (Civil Engineering)

Progress your career with studies in civil engineering. This professionally orientated course provides students with the knowledge and skills that are necessary to obtain employment as a professional engineer as well as gain membership to Engineers Australia.

LOCATION	DURATION	ATAR	APPLICATION
Ballarat	2 years	Not required	Direct
ENTRY REQUIREMENTS (NON-YEAR 12)		ESSENTIAL REQUIREMENTS	
See study.federation.edu.au		See study.federation.edu.au	

### Master of Engineering Technology (Mechanical Engineering)

Progress your career with advanced studies in mechanical engineering. This professionally orientated course provides students with the knowledge and skills that are necessary to obtain employment as a professional engineer as well as gain membership to Engineers Australia.

<b>LOCATION</b> Ballarat	<b>DURATION</b> 2 years	<b>ATAR</b> Not required	<b>APPLICATION</b> Direct
<b>ENTRY REQUIREMENTS (NON-YEAR 12)</b> See study.federation.edu.au		<b>ESSENTIAL REQUIREMENTS</b> See study.federation.edu.au	
<b>PROFESSIONAL RECOGNITION</b> Continuing Professional Development, Engineers Australia			

### Master of Engineering Technology (Mining Engineering)

Progress your career with advanced studies in mining engineering. This professionally orientated course provides students with the knowledge and skills that are necessary to obtain employment as a professional engineer as well as gain membership to Engineers Australia.

LOCATION	DURATION	ATAR	APPLICATION
Ballarat, Online	2 years	Not required	Direct
ENTRY REQUIREMENTS (NON-YEAR 12)		ESSENTIAL REQUIREMENTS	
See <a href="http://study.federation.edu.au">study.federation.edu.au</a>		Additional Details Form. See <a href="http://study.federation.edu.au">study.federation.edu.au</a>	
PROFESSIONAL RECOGNITION			
Continuing Professional Development, Engineers Australia			

### Master of Engineering Technology (Mechatronic Systems Engineering)

This course provides a balance in knowledge and skills between the three key areas of mechanical, electrical, and computer engineering, with a strong focus on project-based and multidisciplinary learning.

LOCATION	DURATION	ATAR	APPLICATION
Gippsland	2 years	Not required	Direct
ENTRY REQUIREMENTS (NON-YEAR 12)		ESSENTIAL REQUIREMENTS	
See <a href="http://study.federation.edu.au">study.federation.edu.au</a>		Additional Details Form. See <a href="http://study.federation.edu.au">study.federation.edu.au</a>	
PROFESSIONAL RECOGNITION			
Continuing Professional Development, Engineers Australia			

### Master of Engineering Technology (Renewable Energy and Electrical Power Systems)

This course covers key areas of electrical circuits, signals and systems, energy conversion, power electronics, power systems, electrical power distribution and protection systems, control systems and renewable energy. Learn more about sensors, artificial perception, and the Internet of Things (IoT) in smart energy systems. In your final year, undertake your own independent research project, relevant to your area of specialisation.

<b>LOCATION</b> Ballarat	<b>DURATION</b> 2 years	<b>ATAR</b> Not required	<b>APPLICATION</b> Direct
<b>ENTRY REQUIREMENTS (NON-YEAR 12)</b> See <a href="http://study.federation.edu.au">study.federation.edu.au</a>		<b>ESSENTIAL REQUIREMENTS</b> Additional Details Form. See <a href="http://study.federation.edu.au">study.federation.edu.au</a>	
<b>PROFESSIONAL RECOGNITION</b> Continuing Professional Development, Engineers Australia			

### Master of Maintenance and Reliability Engineering

Progress your career within the engineering industry and learn about terotechnology and lifecycle costs, risk engineering and reliability applications.

LOCATION	DURATION	ATAR	APPLICATION
Online	2 years	Not required	Direct
<b>ENTRY REQUIREMENTS (NON-YEAR 12)</b> See <a href="http://study.federation.edu.au">study.federation.edu.au</a>		<b>ESSENTIAL REQUIREMENTS</b> Additional Details Form. See <a href="http://study.federation.edu.au">study.federation.edu.au</a>	
<b>PROFESSIONAL RECOGNITION</b> Continuing Professional Development, Engineers Australia			



After attending an all-girls' school, Eliza Dodd enrolled in a Bachelor of Engineering (Civil) at Federation University.

Having enjoyed maths at school, Eliza excelled during her engineering studies, graduating with Honours.

She commenced work as a Site Engineer at Symal, a leading civil construction company, straight after she graduated and today is the Operations Manager at JV Dodd Building.

**Eliza Dodd**  
Bachelor of Engineering (Civil) (Honours)



# Humanities, Social Sciences and Criminology

## Undergraduate Certificate in Creative and Professional Writing

This course is an introduction to the fundamentals of creative and persuasive writing. Upon successful completion you can pathway into the Bachelor of Arts with full credit.

LOCATION	DURATION	GUARANTEED ATAR	APPLICATION
Online	1 year part-time	Not required	Direct
<b>ENTRY REQUIREMENTS</b> Successful completion of a year 12 qualification (VCE/VCAL/interstate or overseas equivalent).		<b>ENTRY REQUIREMENTS (NON-YEAR 12)</b> Higher Education, VET and/or Work/Life Experience	

## Bachelor of Arts

Develop a critical perspective and the transferable skills employers are seeking as you prepare to take a leading role in work and society. Choose from majors: History, Indigenous Studies, Literature, Media and Screen Studies, Sociology, Writing, Community Work, Criminal Justice, Education, Visual Arts, Marketing, Entrepreneurship, Web Project Development and Behavioural Studies. A minor is also available in Visual Culture. Career opportunities include working in government and the public service, curating museum collections, journalism or freelance writing, project management, media, social research, and many other fields.

LOCATION	DURATION	GUARANTEED ATAR	APPLICATION
Ballarat, Berwick, Gippsland, Online	3 years	50	VTAC / Direct
<b>ENTRY REQUIREMENTS</b> Units 3 and 4: a study score of at least 20 in any English.		<b>ENTRY REQUIREMENTS (NON-YEAR 12)</b> Higher Education, VET and/or Work/Life Experience	

## Bachelor of Arts (Humanities) (Honours)

This fourth-year course often serves as a prelude to a higher degree in research or advanced professional practice in careers that entail complex research work. It will prepare individuals for professional or research work in the disciplinary field of their preference by providing training in theory, methodology and epistemology. This Humanities stream involves study in History, Literature, Writing, Media and Screen Studies, Indigenous Studies and Philosophy.

LOCATION	DURATION	ATAR	APPLICATION
Ballarat, Gippsland, Online	1 year	Not required	Direct
<b>ESSENTIAL REQUIREMENTS</b> Submit Research Proposal form. See <a href="http://study.federation.edu.au">study.federation.edu.au</a>			

## Bachelor of Arts (Social Science) (Honours)

This fourth-year course often serves as a prelude to a higher degree in research or advanced professional practice in careers that entail complex research work. It will prepare individuals for professional or research work in the disciplinary field of their preference by providing training in theory, methodology and epistemology. This Social Science stream involves study in Sociology, History, Criminal Justice, Indigenous Studies, and Community and Human Services.

LOCATION	DURATION	ATAR	APPLICATION
Ballarat, Gippsland, Online	1 year	Not required	Direct
<b>ESSENTIAL REQUIREMENTS</b> Submit Research Proposal form. See <a href="http://study.federation.edu.au">study.federation.edu.au</a>			

Studying a Bachelor of Arts degree created a world of career opportunities for Chloe Benson while allowing her to follow her passion for community wellbeing and social justice.

Currently working as a Programs and Innovation Lead at Latrobe Health Assembly, Chloe's love for humanities and writing led her to enrolling in a Bachelor of Arts at Federation University.

"With the help of some amazing lecturers, I excelled during my Bachelor of Arts and decided to pursue postgraduate study. Studying arts encouraged me to look at things from many angles and to keep on asking why and why not. A passion for approaching things differently and for tackling complex problems was a big part of my studies and it remains pivotal to my current work."

**Chloe Benson**  
Bachelor of Arts





## Bachelor of Community and Human Services

Provide support and assistance to a range of individuals, families and communities experiencing family violence, poverty, homelessness, mental health or living with a disability. Subjects include 'social policy', 'social issues and personal values' and 'Australian indigenous societies'. Spend time in the industry, putting your skills into practice and experiencing real-life situations. Career opportunities include case management, counselling, social research, youth justice, family and disability support, aged care, community engagement programs and more.

<b>LOCATION</b> Ballarat, Berwick, Gippsland, <b>FLEX</b> Ballarat, <b>FLEX</b> Berwick, <b>FLEX</b> Gippsland		
<b>DURATION</b> 3 years	<b>GUARANTEED ATAR</b> 50	<b>APPLICATION</b> VTAC / Direct
<b>ENTRY REQUIREMENTS</b> Units 3 and 4: a study score of at least 20 in any English.		<b>ENTRY REQUIREMENTS (NON-YEAR 12)</b> Higher Education, VET and/or Work/Life Experience
<b>ESSENTIAL REQUIREMENTS</b> Working with Children (WWC), Police record check. See study.federation.edu.au		

**FLEX** Flexible delivery is a blend of online study with regular, scheduled on-campus classes.

## Bachelor of Criminology and Criminal Justice

Understand crime data, why crime rates and types vary in different countries and across remote, regional and urban settings. Learn to evaluate the effectiveness of different crime prevention strategies and policies, and develop a knowledge of criminal justice programs in international jurisdictions. Choose a minor or second major from Community and Human Services, Behavioural Studies (Psychology) and Sociology. Prepare for work in roles including state and federal police, in courts and corrections, government departments and for work in community based agencies delivering criminal justice programs.

<b>LOCATION</b> Ballarat, Berwick, Gippsland, Online		
<b>DURATION</b> 3 years	<b>GUARANTEED ATAR</b> 50	<b>APPLICATION</b> VTAC / Direct
<b>ENTRY REQUIREMENTS</b> Units 3 and 4: a study score of at least 20 in any English.		<b>ENTRY REQUIREMENTS (NON-YEAR 12)</b> Higher Education, VET and/or Work/Life Experience

## Bachelor of Human Services and Social Entrepreneurship

Become an entrepreneur who can create, propose and have social impact to address complex local and global challenges through developing innovative and creative solutions. Studies cover organisational management, project and grant writing, advocacy, social policy, research methods and community work. Graduates may work with government and third-sector organisations in case management, community work, group work, ethical practice and managing complex cases.

<b>LOCATION</b> Ballarat, Berwick, Online		
<b>DURATION</b> 3 years	<b>GUARANTEED ATAR</b> 60	<b>APPLICATION</b> VTAC / Direct
<b>ENTRY REQUIREMENTS</b> Units 3 and 4: a study score of at least 20 in any English.		
<b>ENTRY REQUIREMENTS (NON-YEAR 12)</b> Higher Education, VET and/or Work/Life Experience		<b>ESSENTIAL REQUIREMENTS</b> Working with Children (WWC), Police record check. See study.federation.edu.au

## Graduate Certificate in Social and Community Services

Further develop your knowledge and skills in social and community services to become an effective human services professional. This specialist course will prepare you to provide expert advice on a broad range of human services settings to government and non-government organisations. This course is also a pathway to the Master of Social Work (Qualifying).

<b>LOCATION</b> Ballarat, Berwick, Online		
<b>DURATION</b> 6 months	<b>ATAR</b> Not required	<b>APPLICATION</b> Direct
<b>ENTRY REQUIREMENTS</b> See study.federation.edu.au		

## Master of Social Work (Qualifying)

Develop knowledge and expertise of group work, case work, policy and advocacy work, research, evaluation and practice. This prepares graduates from other disciplines to work across human and community services in government bodies, non-government organisations, community and health services and more, both nationally and internationally. Gain real world experience through 140 days or 1000 hours of supervised field placements.

<b>LOCATION</b> Ballarat, Berwick	<b>DURATION</b> 2 years	<b>ATAR</b> Not required	<b>APPLICATION</b> Direct
<b>ENTRY REQUIREMENTS (NON-YEAR 12)</b> See <a href="http://study.federation.edu.au">study.federation.edu.au</a>		<b>ESSENTIAL REQUIREMENTS</b> Working with Children (WWC), Police record check. See <a href="http://study.federation.edu.au">study.federation.edu.au</a>	
<b>PROFESSIONAL RECOGNITION</b> Australian Association of Social Workers (AASW)			



"Studying at Federation is something I'll cherish for the rest of my life. I have made amazing friends from different parts of the world, received opportunities to be involved in leadership and advising roles which in turn honed my personal and professional skills. I had researched other universities which also offered this degree but my heart settled with Australia and Federation University because of its wide range of services, brilliant environment, history, success rate and the huge scope of work in this field that is available."

**Pranaya Lohani**  
Master of Social Work





# Information Technology

## Undergraduate Certificate in Information Technology

This undergraduate certificate will introduce you to networking and security and big data and analytics, providing you with a foundation to pursue your desired IT career or bachelor degree.

<b>LOCATION</b> Online	<b>DURATION</b> 0.5 year	<b>GUARANTEED ATAR</b> Not required	<b>APPLICATION</b> Direct
<b>ENTRY REQUIREMENTS</b> Successful completion of a year 12 qualification (VCE/VCAL/interstate or overseas equivalent).		<b>ENTRY REQUIREMENTS (NON-YEAR 12)</b> Higher Education, VET and/or Work/Life Experience	

## Diploma of University Studies (Information Technology)

Whether you've finished high school, completed VCAL, or want to advance your career with additional qualifications, this foundation course is a great option for you. Study academic writing, mathematical skills as well as first year information technology subjects, and fast track from the diploma into the second year of an information technology degree, subject to attaining a satisfactory academic standard.

<b>LOCATION</b> Ballarat, Berwick, Gippsland	<b>DURATION</b> 1.5 years	<b>ATAR</b> Not required	<b>APPLICATION</b> VTAC / Direct
<b>ENTRY REQUIREMENTS</b> Units 3 and 4: a study score of at least 18 in any English.		<b>ENTRY REQUIREMENTS (NON-YEAR 12)</b> Higher Education, VET and/or Work/Life Experience	

## Bachelor of Information Technology (Big Data and Analytics)

There is a real need for people who have the skills to identify, interpret and analyse trends from the collected data. Study areas such as information and data analysis, allowing you to discover and quantify patterns using statistics, statistical inference, regression analysis, and machine learning. Develop technical knowledge on a range of topics including statistics, statistical inference, high performance computing and visualisation.

<b>LOCATION</b> Ballarat, Online	<b>DURATION</b> 3 years	<b>GUARANTEED ATAR</b> 50	<b>APPLICATION</b> VTAC / Direct
<b>ENTRY REQUIREMENTS</b> Units 3 and 4: a study score of at least 20 in any English.			
<b>ENTRY REQUIREMENTS (NON-YEAR 12)</b> Higher Education, VET and/or Work/Life Experience		<b>PROFESSIONAL RECOGNITION</b> Australian Computer Society (ACS)	

## Bachelor of Information Technology (Business Information Systems)

Harness technology to help organisations achieve a competitive advantage. Develop skills in business processes and study subjects in data and information management, enterprise systems and business intelligence. You'll explore information security, multimedia, knowledge management, databases and emerging technologies in business.

<b>LOCATION</b> Ballarat, Berwick, Online	<b>DURATION</b> 3 years	<b>GUARANTEED ATAR</b> 50	<b>APPLICATION</b> VTAC / Direct
<b>ENTRY REQUIREMENTS</b> Units 3 and 4: a study score of at least 20 in any English.			
<b>ENTRY REQUIREMENTS (NON-YEAR 12)</b> Higher Education, VET and/or Work/Life Experience		<b>PROFESSIONAL RECOGNITION</b> Australian Computer Society (ACS)	





### Bachelor of Information Technology (Cloud and Enterprise Computing)

Learn about world class hardware and operating systems that can support thousands of workloads concurrently. Cloud computing is a critical component of modern business operations. Develop skills in modelling and design, analysis and deployment and be highly sought after by medium and large enterprises including banks, financial institutions, healthcare providers, insurance companies, defence forces and service organisations.

LOCATION	DURATION	GUARANTEED ATAR	APPLICATION
Ballarat	3 years	50	VTAC / Direct
<b>ENTRY REQUIREMENTS</b>			
Units 3 and 4: a study score of at least 20 in any English			
<b>ENTRY REQUIREMENTS (NON-YEAR 12)</b>		<b>PROFESSIONAL RECOGNITION</b>	
Higher Education, VET and/or Work/Life Experience		Australian Computer Society (ACS)	

### Bachelor of Information Technology (Games Development)

Games developers design, create and produce computer and video games and other graphically based software. Gain a solid understanding of game technologies including programming, applied maths, computer graphics and game engines. Work in development teams as an artist, programmer, producer or animator, creating detailed design plans, preparing and designing graphics, animations and images for editing, and testing.

LOCATION	DURATION	GUARANTEED ATAR	APPLICATION
Ballarat, Online	3 years	50	VTAC / Direct
<b>ENTRY REQUIREMENTS</b>			
Units 1 and 2: satisfactory completion in two units (any study combination) of Maths: General Mathematics or Maths: Mathematical Methods or Units 3 and 4: any Mathematics; Units 3 and 4: a study score of at least 20 in any English.			
<b>ENTRY REQUIREMENTS (NON-YEAR 12)</b>		<b>PROFESSIONAL RECOGNITION</b>	
Higher Education, VET and/or Work/Life Experience		Australian Computer Society (ACS)	

### Bachelor of Information Technology (Networking and Security)

Investigate how security breaches occur, how private information is vulnerable and ways to protect it. Delve into networks, their protocols and hardware and investigate how these systems can be vulnerable to a malicious attack. Learn how to defend business, government and individual's, databases which hold sensitive data.

LOCATION	DURATION	GUARANTEED ATAR	APPLICATION
Ballarat, Online	3 years	50	VTAC / Direct
<b>ENTRY REQUIREMENTS</b>			
Units 1 and 2: satisfactory completion in two units (any study combination) of Maths: General Mathematics, Maths: Mathematical Methods or Maths: Specialist Mathematics or Units 3 and 4: a study score of at least 20 in any Mathematics; Units 3 and 4: a study score of at least 20 in any English.			
<b>ENTRY REQUIREMENTS (NON-YEAR 12)</b>		<b>PROFESSIONAL RECOGNITION</b>	
Higher Education, VET and/or Work/Life Experience		Australian Computer Society (ACS)	

## Bachelor of Information Technology

Develop strong communication, academic and problem solving skills – critical attributes for success in the IT sector. Learn programming skills to facilitate smooth communication with software developers, and explore web design, systems modelling and user experience. Participate in our professional engagement course for the opportunity to network and enhance your knowledge of the IT industry.

<b>LOCATION</b> Ballarat, Berwick, Brisbane, Online		
<b>DURATION</b> 3 years	<b>GUARANTEED ATAR</b> 50	<b>APPLICATION</b> VTAC / Direct
<b>ENTRY REQUIREMENTS</b> Units 3 and 4: a study score of at least 20 in any English.		<b>ENTRY REQUIREMENTS (NON-YEAR 12)</b> Higher Education, VET and/or Work/Life Experience
<b>PROFESSIONAL RECOGNITION</b> Australian Computer Society (ACS)		

## Bachelor of Information Technology (Software Development)

This degree gives you the opportunity to learn new programming languages, architecture, and paradigms to create new software applications. You will complete subjects in dynamic web development, data structures and algorithms and agile coding. Graduates may be involved in software release and post-release activities, including product launches, and implementation roles such as installation, configuration, programming/customisation, integration and data migration.

<b>LOCATION</b> Ballarat, Online	<b>DURATION</b> 3 years	<b>GUARANTEED ATAR</b> 50	<b>APPLICATION</b> VTAC / Direct
<b>ENTRY REQUIREMENTS</b> Units 3 and 4: a study score of at least 20 in Maths: Mathematical Methods or at least 20 in Maths: Specialist Mathematics; Units 3 and 4: a study score of at least 20 in any English.			
<b>ENTRY REQUIREMENTS (NON-YEAR 12)</b> Higher Education, VET and/or Work/Life Experience		<b>PROFESSIONAL RECOGNITION</b> Australian Computer Society (ACS)	

## Bachelor of Information Technology (Professional Practice)

Combine study and practical industry experience. Receive a scholarship of \$42,000 over the final two years of this degree as you study and undertake 1600 hours of work integrated learning with IBM® in Ballarat. Second and third year subjects are aligned with your agreed industry focus area in either software development, cloud or mainframe.

<b>LOCATION</b> Ballarat	<b>DURATION</b> 4 years	<b>ATAR</b> Required	<b>APPLICATION</b> VTAC / Direct
<b>ENTRY REQUIREMENTS</b> Prerequisites Units 1 and 2: satisfactory completion in two units (any study combination) of Maths: General Mathematics, Maths: Mathematical Methods or Maths: Specialist Mathematics or Units 3 and 4: any Mathematics; Units 3 and 4: a study score of at least 20 in any English.			
<b>ENTRY REQUIREMENTS (NON-YEAR 12)</b> Higher Education; VET and/or Work/Life Experience		<b>ESSENTIAL REQUIREMENTS</b> Interview. See <a href="http://study.federation.edu.au">study.federation.edu.au</a>	
<b>PROFESSIONAL RECOGNITION</b> Australian Computer Society (ACS)			

## Graduate Certificate in Enterprise Systems

Understand the role of enterprise systems in digital transformation, choosing from Functional or Developer specialisations. The Functional stream leads to consultant/analyst/developer roles to assist businesses in digital transformation, whilst the Developer stream will provide technical skills for customisation, integrating and upgrading of digital enterprise systems.

<b>LOCATION</b> Ballarat, Online	<b>DURATION</b> 0.5 year	<b>ATAR</b> Not required	<b>APPLICATION</b> Direct
<b>ENTRY REQUIREMENTS (NON-YEAR 12)</b> See study.federation.edu.au		<b>ESSENTIAL REQUIREMENTS</b> See study.federation.edu.au	

## Graduate Diploma of Technology (Software Engineering)

Gain the specialist knowledge required to understand and implement advanced software engineering techniques. Design, implement and maintain IT systems using a well-informed software engineering approach and create high quality software in a systematic and efficient manner.

<b>LOCATION</b> Ballarat	<b>DURATION</b> 1.5 years	<b>ATAR</b> Not required	<b>APPLICATION</b> Direct
<b>ENTRY REQUIREMENTS (NON-YEAR 12)</b> See study.federation.edu.au			

**GUARANTEED ATAR** See definition on p 61



"I gained a great education from Federation's fantastic lecturers and valuable industry experience from the university's partnership with IBM in the Professional Practice course. Thanks to this program I am now working at IBM as a graduate systems programmer."

### Scott Huggard

Bachelor of Information Technology (Professional Practice)

### Graduate Diploma of Technology (Enterprise Systems and Business Analytics)

This stream includes subjects that utilise SAP the world's largest enterprise software company. Students will be well prepared to undertake SAP certification if desired. Graduate of the Enterprise Systems and Business Analytics stream will be immersed into an ever changing, IT global economic landscape. New growth areas include cloud computing, mobility, data warehousing, business intelligence, and big data techniques is prominent.

<b>LOCATION</b> Ballarat, Online	<b>DURATION</b> 1.5 years	<b>ATAR</b> Not required	<b>APPLICATION</b> Direct
<b>ENTRY REQUIREMENTS (NON-YEAR 12)</b> See <a href="http://study.federation.edu.au">study.federation.edu.au</a>		<b>ESSENTIAL REQUIREMENTS</b> Additional Details Form. See <a href="http://study.federation.edu.au">study.federation.edu.au</a>	

### Master of Applied Cyber Security

Gain a deeper understanding of relevant topics and technology pertaining to threats detection, risk analytics, data security, incident response, privacy protection, security audit and compliance, using innovative technologies from leading vendors like Amazon Web Services (AWS), IBM and Cisco. Core and elective subjects provide knowledge and skills to analyse, inspect and prevent cyber risks by adopting new practices and policies. Subjects are associated with the AWS cloud online virtual software platform, preparing you for AWS Certification. This program is also available as a graduate certificate and graduate diploma option.

<b>LOCATION</b> Ballarat, Online	<b>DURATION</b> 2 years	<b>ATAR</b> Not required	<b>APPLICATION</b> Direct
<b>ENTRY REQUIREMENTS (NON-YEAR 12)</b> See <a href="http://study.federation.edu.au">study.federation.edu.au</a>		<b>ESSENTIAL REQUIREMENTS</b> See <a href="http://study.federation.edu.au">study.federation.edu.au</a>	

### Master of Technology (Enterprise Systems and Business Analytics)

This course provides students with an opportunity to gain up to date knowledge and skills to analyse, implement and use Enterprise Systems. Gain a deep understanding of relevant topics and technology such as big data, business analytics, cloud computing, IS security, project management and IT strategy, using cutting edge technologies from leading vendors like SAP, IBM, SAS and Teradata.

<b>LOCATION</b> Ballarat, Brisbane, Online			
<b>DURATION</b> 2 years	<b>ATAR</b> Not required	<b>APPLICATION</b> Direct	
<b>ENTRY REQUIREMENTS (NON-YEAR 12)</b> See <a href="http://study.federation.edu.au">study.federation.edu.au</a>		<b>ESSENTIAL REQUIREMENTS</b> See <a href="http://study.federation.edu.au">study.federation.edu.au</a>	


### Master of Technology (Software Engineering)

Gain specialist knowledge in advanced software engineering techniques. Design, implement and maintain IT systems using a well-informed software engineering approach and create high quality software in a systematic and efficient manner.

<b>LOCATION</b> Ballarat, Brisbane	<b>DURATION</b> 2 years	<b>ATAR</b> Not required	<b>APPLICATION</b> Direct
<b>ENTRY REQUIREMENTS (NON-YEAR 12)</b> See <a href="http://study.federation.edu.au">study.federation.edu.au</a>			
<b>ESSENTIAL REQUIREMENTS</b> Applicants must provide evidence of successful completion of relevant higher education studies.			







# Nursing, Midwifery, Paramedicine and Health

Aside from learning on the job, the best way to prepare yourself for a career in nursing is through simulated learning. All of our campuses have purpose-built units that mirror the hospital environment, where learning is based on real and complex clinical scenarios that require various levels of care.

## Bachelor of Nursing

Deliver the highest quality care to improve your patients' outcomes. Learn to work with diverse communities, mental health, medical and surgical nursing and palliative care. You may choose to work in emergency illness, mental health, long-term care, intercultural health or population health.

<b>LOCATION</b> Ballarat, <b>FLEX</b> Ballarat, Berwick, <b>FLEX</b> Berwick, Gippsland, <b>FLEX</b> Gippsland, <b>FLEX</b> East Gippsland		
<b>DURATION</b> 3 years	<b>ATAR</b> Required	<b>APPLICATION</b> VTAC / Direct
<b>ENTRY REQUIREMENTS</b> Units 1 and 2: satisfactory completion in two units (any study combination) of Maths: General Mathematics, Maths: Mathematical Methods or Maths: Specialist Mathematics or Units 3 and 4: any Mathematics; Units 3 and 4: a study score of at least 25 in any English.		
<b>ENTRY REQUIREMENTS (NON-YEAR 12)</b> Higher Education, VET and/or Work/Life Experience		<b>ESSENTIAL REQUIREMENTS</b> Working with Children (WWC), Police record check. See <a href="http://study.federation.edu.au">study.federation.edu.au</a>
<b>PROFESSIONAL RECOGNITION</b> Australian Nursing and Midwifery Accreditation Council (ANMAC), Australian Health Practitioner Registration Authority (AHPRA), Nursing and Midwifery Board of Australia (NMBA)		

## Bachelor of Nursing (Honours)

Covers research and coursework under academic supervision, in research methodologies and communication. Successful graduates will contribute significantly to healthcare and nursing, through their knowledge, research and evaluation skills.

<b>LOCATION</b> Ballarat, Berwick, Gippsland	<b>DURATION</b> 1 year	<b>ATAR</b> Not required	<b>APPLICATION</b> Direct
<b>ENTRY REQUIREMENTS (NON-YEAR 12)</b> See <a href="http://study.federation.edu.au">study.federation.edu.au</a>		<b>PROFESSIONAL RECOGNITION</b> Australian Nursing and Midwifery Accreditation Council (ANMAC).	

## Bachelor of Nursing/Bachelor of Midwifery

The combined degree aims to provide graduates with a blend of knowledge, skill and behaviours to work in general nursing and midwifery practice settings. You will develop skills in communication, research, problem solving and critical thinking required in healthcare settings.

<b>LOCATION</b> Gippsland	<b>DURATION</b> 4 years	<b>GUARANTEED ATAR</b> 70	<b>APPLICATION</b> VTAC / Direct
<b>ENTRY REQUIREMENTS</b> Units 3 and 4: a study score of at least 25 in English and Units 1 and 2: a study score at least 25 in General Mathematics.		<b>ENTRY REQUIREMENTS (NON-YEAR 12)</b> Higher Education, VET and/or Work/Life Experience	
<b>PROFESSIONAL RECOGNITION</b> Australian Nursing and Midwifery Accreditation Council (ANMAC).			

**GUARANTEED ATAR** See definition on p 61

**FLEX** Flexible delivery is a blend of online study with regular, scheduled on-campus classes.



### Bachelor of Occupational Therapy (Honours)

Make a meaningful difference in the community with an occupational therapy degree. Assist and empower people to overcome limitations in their daily lives and occupations. Our degree focuses on contemporary occupational therapy practice and is based on real-life scenarios and cases.

LOCATION	DURATION	GUARANTEED ATAR	APPLICATION
Gippsland	4 years	70	VTAC / Direct
<b>ENTRY REQUIREMENTS</b> Units 1 and 2: satisfactory completion in two units (any study combination) of any Mathematics or Units 3 and 4: one of Biology, Chemistry, Health and Human Development, any Mathematics, Physical Education or Physics; Units 3 and 4: a study score of at least 25 in any English.			
<b>ENTRY REQUIREMENTS (NON-YEAR 12)</b> Higher Education, VET and/or Work/Life Experience		<b>ESSENTIAL REQUIREMENTS</b> Working with Children (WWC), Police record check. See <a href="http://study.federation.edu.au">study.federation.edu.au</a>	
<b>PROFESSIONAL RECOGNITION</b> Subject to accreditation by Australian Occupational Therapy Council (OTC)			

### Bachelor of Physiotherapy

Physiotherapists assess, diagnose and rehabilitate acute and chronic musculoskeletal, neurological and cardiovascular disease. With a focus on the physiotherapist-client relationship, this course is highly practical in its orientation and provides graduates with the skills to work with everyone from children to the elderly (including 1094 hours of clinical placements).

LOCATION	DURATION	GUARANTEED ATAR	APPLICATION
Gippsland	4 years	80	VTAC / Direct
<b>ENTRY REQUIREMENTS</b> Units 3 and 4: A study score of at least 25 in any English, and at least 25 in biology, chemistry or physics.			
<b>ENTRY REQUIREMENTS (NON-YEAR 12)</b> Undergraduate degree in any discipline; relevant life experience is desirable.			
<b>PROFESSIONAL RECOGNITION</b> Australian Physiotherapy Council; registration with the Physiotherapy Board of Australia and New Zealand through the Australian Health Practitioner Regulation Agency (AHPRA).			

### Bachelor of Physiotherapy (Honours)

Available to high achieving students completing the Bachelor of Physiotherapy at Federation University, following completion of second year. Students will undertake honours over the final two years of their degree, allowing for a research project and thesis completion to expand their learning.

LOCATION	DURATION	ATAR	APPLICATION
Gippsland	2 years	Not required	Direct
<b>ENTRY REQUIREMENTS (NON-YEAR 12)</b> See study.federation.edu.au		<b>ESSENTIAL REQUIREMENTS</b> See study.federation.edu.au	

### \*Bachelor of Speech Pathology (Honours)

Core studies in the first two years of this degree will help you build a solid foundation to diagnose and treat communication disorders, including difficulties with speech, language, fluency and voice. In third and fourth year, you may pursue your interests by selecting either the professional honours or research honours, where you will work on an individual project. As a graduate, you may work in public and private settings as a clinician, educator, policy advisor, manager, advocate, consultant and in other aligned roles.

<b>LOCATION</b> Ballarat, <sup>FLEX</sup> Ballarat, Gippsland, <sup>FLEX</sup> Gippsland		
<b>DURATION</b> 4 years	<b>GUARANTEED ATAR</b> 70	<b>APPLICATION</b> VTAC / Direct
<b>ENTRY REQUIREMENTS</b> Units 1 and 2: satisfactory completion in two units (any study combination) of any Mathematics or Units 3 and 4: one of Biology, Chemistry, Health and Human Development, any Mathematics, Physical Education or Physics; Units 3 and 4: a study score of at least 25 in any English.		
<b>ENTRY REQUIREMENTS (NON-YEAR 12)</b> Higher Education, VET and/or Work/Life Experience		<b>ESSENTIAL REQUIREMENTS</b> Working with Children (WWC), Police record check. See <a href="http://study.federation.edu.au">study.federation.edu.au</a>

\*Proposed course only. Subject to Federation's course accreditation processes.

### Master of Health (Advanced Nursing)

Prepare with advanced practice knowledge for roles in leadership, management and education. Also available as a graduate certificate.

LOCATION	DURATION	ATAR	APPLICATION
Ballarat	2 years	Not required	Direct
<b>ENTRY REQUIREMENTS (NON-YEAR 12)</b> See study.federation.edu.au		<b>ESSENTIAL REQUIREMENTS</b> See study.federation.edu.au	



### Graduate Diploma of Health (Workplace Health and Safety)

Develop, implement and evaluate workplace health and safety interventions by utilising strong evidence based practice. Also available as a graduate certificate (1 year).

<b>LOCATION</b> FLEX Ballarat	<b>DURATION</b> 2 years	<b>ATAR</b> Not required	<b>APPLICATION</b> Direct
<b>ENTRY REQUIREMENTS (NON-YEAR 12)</b> See <a href="http://study.federation.edu.au">study.federation.edu.au</a>		<b>ESSENTIAL REQUIREMENTS</b> See <a href="http://study.federation.edu.au">study.federation.edu.au</a>	
<b>PROFESSIONAL RECOGNITION</b> Accredited by the Safety Institute of Australia (SIA).			

### Graduate Diploma of Midwifery

An innovative course with a strong regional focus. Develop critical thinking skills as well as theoretical and practical knowledge, necessary to practice midwifery in a multidisciplinary context and in a variety of settings. Also available as a graduate diploma.

<b>LOCATION</b> Ballarat, Gippsland	<b>DURATION</b> 1 year	<b>ATAR</b> Not required	<b>APPLICATION</b> Direct
<b>ENTRY REQUIREMENTS (NON-YEAR 12)</b> See <a href="http://study.federation.edu.au">study.federation.edu.au</a>			
<b>ESSENTIAL REQUIREMENTS</b> Working with Children (WWC), Police record check. See <a href="http://study.federation.edu.au">study.federation.edu.au</a>			
<b>PROFESSIONAL RECOGNITION</b> Australian Health Practitioner Regulation Agency (AHPRA), Nursing and Midwifery Board of Australia			

### Graduate Diploma of Paramedicine

Transition into paramedicine from nursing, and help care for those suffering a health crisis. Upon graduation, apply for Graduate Entry Programs within Ambulance Victoria (AV) and Private Patient Transport Services. Graduates will also meet the requirements for employment with other pre-hospital and ambulance service employers throughout Australia, New Zealand and the United Kingdom (UK).

<b>LOCATION</b> Ballarat	<b>DURATION</b> 1 year	<b>ATAR</b> Not required	<b>APPLICATION</b> Direct
<b>ENTRY REQUIREMENTS (NON-YEAR 12)</b> See <a href="http://study.federation.edu.au">study.federation.edu.au</a>		<b>ESSENTIAL REQUIREMENTS</b> Police record check. See <a href="http://study.federation.edu.au">study.federation.edu.au</a>	
<b>PROFESSIONAL RECOGNITION</b> Ambulance Victoria, Full accreditation with the Australasian Council of Ambulance Authorities			

### Master of Health (Health Leadership)

Explore leadership action through work-integrated learning experiences, to assist in client health and service delivery excellence.

<b>LOCATION</b> Online	<b>DURATION</b> 2 years	<b>ATAR</b> Not required	<b>APPLICATION</b> Direct
<b>ENTRY REQUIREMENTS (NON-YEAR 12)</b> See study.federation.edu.au		<b>ESSENTIAL REQUIREMENTS</b> See study.federation.edu.au	

### Master of Health (Research Practice)

Develop critical thinking and research skills that are highly sought after in a competitive employment environment.

<b>LOCATION</b> Online	<b>DURATION</b> 2 years	<b>ATAR</b> Not required	<b>APPLICATION</b> Direct
<b>ENTRY REQUIREMENTS (NON-YEAR 12)</b> See study.federation.edu.au		<b>ESSENTIAL REQUIREMENTS</b> See study.federation.edu.au	

**GUARANTEED ATAR** See definition on p 61

**FLEX** Flexible delivery is a blend of online study with regular, scheduled on-campus classes.



### Master of Health (Neonatal Care)

This program prepares registered nurses and midwives to work in a Special Care Nursery. A clinical placement component of 80 hours is included. Also available as a graduate diploma.

LOCATION	DURATION	ATAR	APPLICATION
<b>FLEX</b> Ballarat, <b>FLEX</b> Gippsland	2 years	Not required	Direct
<b>ENTRY REQUIREMENTS (NON-YEAR 12)</b> See <a href="http://study.federation.edu.au">study.federation.edu.au</a>			

### Master of Health (Mental Health Nursing)

Successful nursing graduates can develop a deep understanding of the theory and clinical practice relationship. Gain advanced level skills and knowledge for application in the mental health community, leading to clinical career progression. This program is also available as a graduate certificate.

LOCATION	DURATION	ATAR	APPLICATION
Online	2 years	Not required	Direct
<b>ENTRY REQUIREMENTS (NON-YEAR 12)</b> See <a href="http://study.federation.edu.au">study.federation.edu.au</a>			

### Master of Health (Child and Family Health)

This program prepares registered nurses with midwifery qualifications for advanced practice in maternal and child health nursing. Complete a clinical placement component of 300 hours, and gain advanced skills to work with children from birth to school age and families. Also available as a graduate diploma.

LOCATION	DURATION	ATAR	APPLICATION
<b>FLEX</b> Berwick	2 years	Not required	Direct
<b>ENTRY REQUIREMENTS (NON-YEAR 12)</b> See <a href="http://study.federation.edu.au">study.federation.edu.au</a>			

### Master of Health (Perinatal and Infant Mental Health)

Understand, educate and support families experiencing mental health difficulties within the first 12 months following childbirth. A clinical placement component of 80 hours is included. Also available as a graduate diploma and graduate certificate.

LOCATION	DURATION	ATAR	APPLICATION
<b>FLEX</b> Ballarat, <b>FLEX</b> Gippsland	2 years	Not required	Direct
<b>ENTRY REQUIREMENTS (NON-YEAR 12)</b> See <a href="http://study.federation.edu.au">study.federation.edu.au</a>			

### Master of Health (Workplace Health and Safety)

This course aims to produce Workplace Health and Safety OH&S researchers who can further evaluate WH&S interventions and add to the evidence base for the discipline area. Also available as a graduate certificate and graduate diploma.

LOCATION	DURATION	ATAR	APPLICATION
<b>FLEX</b> Ballarat	3 years	Not required	Direct
<b>ENTRY REQUIREMENTS (NON-YEAR 12)</b> See <a href="http://study.federation.edu.au">study.federation.edu.au</a>			

### Master of Health (Health Services Management)

Focusing on safety and quality, learn how policy, leadership and strategic management each play a central role. Drive change and innovation in the workplace. Also available as a graduate certificate and graduate diploma.

LOCATION	DURATION	ATAR	APPLICATION
Online	2 years	Not required	Direct
<b>ENTRY REQUIREMENTS (NON-YEAR 12)</b> See <a href="http://study.federation.edu.au">study.federation.edu.au</a>			

### Master of Public Health

With a strong emphasis on research, this program provides professionals with enhanced skills to pursue a career in public health. Specialisations include research, project, public health informatics, public health economics and health system management. Also incorporating Graduate Certificate.

LOCATION	DURATION	ATAR	APPLICATION
Ballarat, Brisbane	2 years	Not required	Direct
<b>ENTRY REQUIREMENTS (NON-YEAR 12)</b> See <a href="http://study.federation.edu.au">study.federation.edu.au</a>			

### \*Master of Speech Pathology

If you have completed an undergraduate degree in a cognate area such as health science, education or nursing, this program will help you build specialist knowledge in diagnosing and treating people of all ages with communication and/or swallowing disorders as a result of illness, injury or disability. Completion of this program qualifies you to work as a speech pathologist, as either a sole therapist or as part of an interdisciplinary team.

LOCATION		
Ballarat, <b>FLEX</b> Ballarat, Gippsland, <b>FLEX</b> Gippsland		
DURATION	ATAR	APPLICATION
2 years	Not required	Direct
ENTRY REQUIREMENTS (NON-YEAR 12)		
See <a href="http://study.federation.edu.au">study.federation.edu.au</a>		

\*Proposed course only. Subject to Federation's course accreditation processes.



"The most rewarding aspects of studying at Federation University were certainly the knowledge and skills I gained to become a Registered Nurse. The university offers the finest lecturers who understand students fully and offer them the appropriate support to succeed in their studies. I'm currently working at Kooweerup Regional Health Service and thoroughly enjoying it."

**Medina Lamunu**  
Bachelor of Nursing (Honours)

# Performing Arts, Visual Arts

Home to our unique Arts Academy, a purpose-built centre for performing and visual arts, Camp Street Campus encourages and facilitates creativity of all kinds, and plays an important role in Ballarat's thriving arts and culture scene.

## Bachelor of Visual Arts

You will develop the skills to create your own future in the diverse creative industries. Our Arts Academy has specialised facilities for you to work in ceramics, drawing, printmaking, photography and painting. You will also explore your studio-based practice through workshops of experimentation and self-discovery. All intensive teaching staff are practicing artists and designers with outstanding reputations both in Australia and internationally.

<b>LOCATION</b> Ballarat, Gippsland	<b>DURATION</b> 3 years	<b>ATAR</b> Required	<b>APPLICATION</b> VTAC / Direct
<b>ENTRY REQUIREMENTS</b> Units 3 and 4: a study score of at least 20 in any English.		<b>ENTRY REQUIREMENTS (NON-YEAR 12)</b> Higher Education, VET and/or Work/Life Experience	
<b>ESSENTIAL REQUIREMENTS</b> Interview and folio. See <a href="http://study.federation.edu.au">study.federation.edu.au</a>			

## Bachelor of Performing Arts

Our Arts Academy is renowned for its holistic and multi-disciplinary approach to training contemporary performers. We develop your practice through a comprehensive curriculum that includes classes in acting, singing, voice, movement, dance, creativity, theatre-making, aerobic fitness and mindfulness. You will be prepared for a range of career opportunities in television and theatre, music theatre, opera, film, cabaret, comedy and multi-media performance.

<b>LOCATION</b> Ballarat	<b>DURATION</b> 3 years	<b>ATAR</b> Required	<b>APPLICATION</b> VTAC / Direct
<b>ENTRY REQUIREMENTS</b> Units 3 and 4: a study score of at least 20 in any English.		<b>ENTRY REQUIREMENTS (NON-YEAR 12)</b> Higher Education, VET and/or Work/Life Experience	
<b>ESSENTIAL REQUIREMENTS</b> Interview and audition. See <a href="http://study.federation.edu.au">study.federation.edu.au</a>			

## Bachelor of Arts (Creative Arts) (Honours)

This course often serves as a prelude to a higher degree in research or advanced professional practice in careers that entail complex research work. It will prepare individuals for professional or research work in the disciplinary field of their preference by providing training in theory, methodology and epistemology. This Creative Arts stream involves study in ceramics/3D, drawing, printmaking, photography, painting, performance and dance.

<b>LOCATION</b> Ballarat, Gippsland	<b>DURATION</b> 1 year	<b>ATAR</b> Not required	<b>APPLICATION</b> Direct
<b>ENTRY REQUIREMENTS (NON-YEAR 12)</b> Higher Education, VET and/or Work/Life Experience		<b>ESSENTIAL REQUIREMENTS</b> See <a href="http://study.federation.edu.au">study.federation.edu.au</a>	



Grace Ware is one of 24 students across Australia accepted into Perth Institute of Contemporary Arts' (PICA) National Graduate Show for 2021.

Grace was also presented a \$10,000 in-kind award from industry at the university's Eye Exhibition to progress her talent.

"I chose to study Fine Arts at Federation as it allowed me to connect closely with my local art community. I've not only developed my skills and confidence as an artist but I have also built a wonderful, supportive network – helping me feel more confident working in the art industry since graduating."

**Grace Ware**  
Bachelor of Fine Arts





"Ross Hall told us to 'build our own house' and so I really just did that. I made my own work and I shaped my own space. I'm really grateful for all the opportunities I had while studying at Fed."

**Michelle Brasier**

Arts Academy graduate

Michelle Brasier has become a multiple Green Room Award nominated singer, writer, actor, director and comedian.

In 2020, she joined the cast of ABC's acclaimed series Shaun Micallef's Mad As Hell, while continuing her work in the US.

Michelle credits her versatility of producing, directing and creating work to one of her Federation University lecturers.





**Broden Kelly,  
Mark Samuel Bonanno,  
Zachary Ruane,  
Sam Lingham  
and Tom Armstrong**  
Arts Academy

Award-winning comedy group Aunty Donna is the creation of Federation University Alumni Broden Kelly, Mark Samuel Bonanno and Zachary Ruane.

Sam Lingham and Tom Armstrong, graduates of Federation, also helped launch Aunty Donna onto the Melbourne comedy scene in 2012, assisting with directing, writing and designing.

In 2020, the fast-paced comedy group premiered Aunty Donna's Big Ol' House of Fun on Netflix, while in 2019, Aunty Donna released Glennridge Secondary College – a 16-part webseries which attracted more than 2.5million views on YouTube before being nominated for an AACTA Award.



# Psychology

When you study Psychology at Federation University, you will acquire the knowledge and skills you need for the career you want. Our study options and smaller class sizes provide the opportunity to learn, develop, and apply skills that will be valuable in your professional and personal lives. This includes oral and written communication, research, and high level problem solving and critical thinking skills.

Importantly, we understand that you want to be a name, not just a number. When you study Psychology at Federation University, you will be in a highly supportive environment, as demonstrated by our number 1 ranking for student support from psychology graduates across all Victorian public universities.

## Bachelor of Psychological Science

This foundation course delivers fundamental knowledge, theory and understanding of different aspects of psychology. Explore a range of subjects to examine complexities of human thought and behaviour, including developmental psychology, cognitive psychology, social psychology, abnormal psychology, and personality.

<b>LOCATION</b> Ballarat, Berwick, Gippsland	<b>DURATION</b> 3 years	<b>GUARANTEED ATAR</b> 50	<b>APPLICATION</b> VTAC / Direct
<b>ENTRY REQUIREMENTS</b> Units 3 and 4: a study score of at least 20 in any English.		<b>ENTRY REQUIREMENTS (NON-YEAR 12)</b> Higher Education, VET and/or Work/Life Experience	
<b>ESSENTIAL REQUIREMENTS</b> See <a href="http://study.federation.edu.au">study.federation.edu.au</a>		<b>PROFESSIONAL RECOGNITION</b> Australian Psychology Accreditation Council (APAC)	

## Bachelor of Psychological Science (Honours)

With a strong research emphasis, you will plan, implement and report on a research project under supervision, in addition to undertaking a number of core subjects (Psychological Practice, Psychological Research, Integrating Research and Practice and Psychological Assessment). The course is for students who wish to engage in research and professional practice in the field of psychology.

<b>LOCATION</b> Ballarat, Berwick, Gippsland	<b>DURATION</b> 1 year	<b>ATAR</b> Not required	<b>APPLICATION</b> Direct
<b>ESSENTIAL REQUIREMENTS</b> See <a href="http://study.federation.edu.au">study.federation.edu.au</a>		<b>PROFESSIONAL RECOGNITION</b> Australian Psychology Accreditation Council (APAC)	





"I chose to study Psychological Science at Federation because of the university's commitment to creating a sense of community and belonging. Due to this devotion, I have been fortunate in developing professional relationships with members of the psychology department which have resulted in unique opportunities. For example, in the last year of my Bachelor degree, I was offered an internship at the Austin Hospital as a research assistant. Such an experience wouldn't exist without Federation's commitment to developing an environment where interpersonal relationships between staff and students are welcome. If you are a future student wanting a mix between academia and a small welcoming environment, I'd choose Fed."

#### **Myles Medwell**

Bachelor of Psychological Science  
Graduate Diploma of Psychological Science  
Master of Professional Psychology

#### **Graduate Certificate in Human Behaviour and Counselling**

Obtain knowledge and skills in human behaviour applicable to a variety of professional contexts including counsellor, support worker, community welfare worker and family support worker.

<b>LOCATION</b> Online	<b>DURATION</b> 0.5 year	<b>ATAR</b> Not required	<b>APPLICATION</b> Direct
<b>ENTRY REQUIREMENTS (NON-YEAR 12)</b> See <a href="http://study.federation.edu.au">study.federation.edu.au</a>		<b>ESSENTIAL REQUIREMENTS</b> See <a href="http://study.federation.edu.au">study.federation.edu.au</a>	
<b>PROFESSIONAL RECOGNITION</b> Australian Psychology Accreditation Council (APAC)			

#### **Master of Professional Psychology**

This course develops specialised knowledge and skills for the professional practice of psychology, including ethical and legal practice, assessment, and interventions across the lifespan. Graduates can apply for provisional registration as a general psychologist, and pursue a one year internship leading to general registration as a psychologist (conditional on the course being accredited).

<b>LOCATION</b> Ballarat	<b>DURATION</b> 1 year	<b>ATAR</b> Not required	<b>APPLICATION</b> Direct
<b>ENTRY REQUIREMENTS (NON-YEAR 12)</b> See <a href="http://study.federation.edu.au">study.federation.edu.au</a>		<b>ESSENTIAL REQUIREMENTS</b> See <a href="http://study.federation.edu.au">study.federation.edu.au</a>	
<b>PROFESSIONAL RECOGNITION</b> Australian Psychology Accreditation Council (APAC)			

#### **Master of Psychology (Clinical)**

Advance your knowledge of clinical problems in childhood, adolescence and adulthood, as well your understanding of evidence-based psychological assessments and interventions and the ethics related to your work. Combining coursework, clinical practice and research, this course prepares you for registration as a psychologist with the Psychology Board of Australia. Graduates are eligible to apply for psychologists positions, including clinical psychologist positions in either the public or private sectors.

<b>LOCATION</b> Ballarat	<b>DURATION</b> 2 years	<b>ATAR</b> Not required	<b>APPLICATION</b> Direct
<b>ENTRY REQUIREMENTS (NON-YEAR 12)</b> See <a href="http://study.federation.edu.au">study.federation.edu.au</a>		<b>ESSENTIAL REQUIREMENTS</b> See <a href="http://study.federation.edu.au">study.federation.edu.au</a>	
<b>PROFESSIONAL RECOGNITION</b> Australian Psychology Accreditation Council (APAC), Psychology Board of Australia			



# Science

## Bachelor of Biomedical Science

Biomedicine plays a major role in helping people lead healthier lives. Study lifespan nutrition, food microbiology, metabolism and applied biochemistry. Be prepared for a career in biomedical research or a position in a range of health-related industries such as laboratory technology, medical sales, research and pharmaceuticals.

LOCATION	DURATION	GUARANTEED ATAR	APPLICATION
Ballarat, Berwick, Gippsland, Online	3 years	60	VTAC / Direct
<b>ENTRY REQUIREMENTS</b>			
Units 3 and 4: a study score of at least 20 in any Mathematics or at least 20 in any Science; Units 3 and 4: a study score of at least 20 in any English.			
<b>ENTRY REQUIREMENTS (NON-YEAR 12)</b>			
Higher Education, VET and/or Work/Life Experience			

## Bachelor of Biotechnology

Biotechnology has important applications in medicine, agriculture and food production. Study core foundation subjects in this laboratory-based degree, including principles of modern instrumentation, experimental design and data analysis, biochemical and microbiological techniques as well as recombinant DNA technology.

LOCATION	DURATION	GUARANTEED ATAR	APPLICATION
Ballarat, Gippsland, Online	3 years	60	VTAC / Direct
<b>ENTRY REQUIREMENTS</b>			
Units 3 and 4: a study score of at least 20 in any Mathematics or at least 20 in any Science; Units 3 and 4: a study score of at least 20 in any English.			
<b>ENTRY REQUIREMENTS (NON-YEAR 12)</b>			
Higher Education, VET and/or Work/Life Experience			

## Bachelor of Environmental and Conservation Science

Learn about the management, conservation and rehabilitation of our natural and degraded ecosystems. With a strong focus on the Australian environment, you will explore subject areas such as ecology and wildlife, water and climate, mine site rehabilitation, landscape management and restoration.

LOCATION	DURATION	GUARANTEED ATAR	APPLICATION
Ballarat, Berwick, Gippsland, Online	3 years	60	VTAC / Direct
<b>ENTRY REQUIREMENTS</b>			
Units 3 and 4: a study score of at least 20 in any English; Units 3 and 4: a study score of at least 20 in one of any Mathematics or any Science.			
<b>ENTRY REQUIREMENTS (NON-YEAR 12)</b>			
Higher Education, VET and/or Work/Life Experience			

"Federation was my university of choice due to the degree offered. The Bachelor of Veterinary and Wildlife Science allowed me to work in the industry of Australian fauna that I love so much. The staff and lecturers were approachable and helpful and the class sizes were appropriate, allowing for reasonable exchanges of ideas amongst the students but small enough that I never felt like a number."

**Rebecca McIntosh**

Bachelor of Veterinary and Wildlife Science





## Bachelor of Science

If you are fascinated by science, this comprehensive degree could be your passport to an exciting future in one of many diverse areas. Tailor this course to your specific career destination and interests. Majors include Biochemistry, Biological Science, Molecular Biology, Behavioural Science, Chemistry, Ecology, Environmental Restoration, Exercise Science, Food science, Health and nutrition, Mathematics and Microbiology.

<b>LOCATION</b> Ballarat, Berwick, Gippsland, Online		
<b>DURATION</b> 3 years	<b>GUARANTEED ATAR</b> 60	<b>APPLICATION</b> VTAC / Direct
<b>ENTRY REQUIREMENTS</b> Units 3 and 4: a study score of at least 20 in any Mathematics or at least 20 in any Science; Units 3 and 4: a study score of at least 20 in any English.		
<b>ENTRY REQUIREMENTS (NON-YEAR 12)</b> Higher Education, VET and/or Work/Life Experience		
<b>PROFESSIONAL RECOGNITION</b> Royal Australian Chemical Institute; Australian Society for Microbiology; Environment Institute of Australia and New Zealand		

## Bachelor of Science (Advanced)

As a high achieving student, complete a specialised pathway allowing for a double major. A semester long project in third year provides advanced skills in experimental design, data collection and synthesis, problem solving and critical analysis. Majors include Behavioural Science, Biochemistry, Biological Science, Chemistry, Ecology, Environmental Restoration, Exercise Science, Food Science, Health and Nutrition, Mathematics, Microbiology and Molecular Biology.

<b>LOCATION</b> Ballarat, Berwick, Gippsland, Online		
<b>DURATION</b> 3 years	<b>ATAR</b> Required	<b>APPLICATION</b> VTAC / Direct
<b>ENTRY REQUIREMENTS</b> English Units 3 and 4: a study score of at least 30 in any English. Maths/Science Units 3 and 4: a study score of at least 30 in two Maths (Methods or Specialist) or Sciences (Biology, Chemistry, Environmental Science, Geography, Physics or Psychology).		
<b>PROFESSIONAL RECOGNITION</b> Royal Australian Chemical Institute; Australian Society for Microbiology; Environment Institute of Australia and New Zealand		

## Bachelor of Science (Honours)

Undertake a research project, as well as coursework studies in research methodologies and communication. This is a fourth-year course for graduates of science, IT and mathematical science undergraduate degrees. It serves as a prelude to a research higher degree.

<b>LOCATION</b> Ballarat, Berwick, Gippsland		
<b>DURATION</b> 1 year	<b>ATAR</b> Not required	<b>APPLICATION</b> VTAC / Direct
<b>ENTRY REQUIREMENTS (NON-YEAR 12)</b> See study.federation.edu.au		
<b>PROFESSIONAL RECOGNITION</b> Royal Australian Chemical Institute; Australian Society for Microbiology; Environment Institute of Australia and New Zealand		

## Bachelor of Veterinary and Wildlife Science

This degree offers a regional perspective relevant to local wildlife and animal health. You will study a wide range of subjects including anatomy, animal health, biochemistry, cellular metabolism, immunology, microbiology, physiology and zoology.

<b>LOCATION</b> Ballarat, Berwick, Gippsland, Online		
<b>DURATION</b> 3 years	<b>GUARANTEED ATAR</b> 60	<b>APPLICATION</b> VTAC / Direct
<b>ENTRY REQUIREMENTS</b> Units 3 and 4: a study score of at least 20 in any Mathematics or at least 20 in any Science; Units 3 and 4: a study score of at least 20 in any English.		<b>ENTRY REQUIREMENTS (NON-YEAR 12)</b> Higher Education, VET and/or Work/Life Experience
<b>ESSENTIAL REQUIREMENTS</b> Non-Year 12 VTAC applicants: VTAC Personal Statement form. See study.federation.edu.au		

**GUARANTEED ATAR** See definition on p 61



"Studying at a smaller regional university definitely provided me with great access to a knowledge base and all the field trips provided me with a practical chance to learn. As part of my studies, I participated in a three-week study tour of Nepal, focusing on the community's approach to wildlife conservation. I now work with the West Gippsland Catchment Management Authority as a river and wetlands project officer."

**Elsa Burnell**

Bachelor of Environmental and Conservation Science

### Bachelor of Geoscience

Explore our planet in theory and field experience, using mapping, technology and historical data to build conceptual models, and gain experience in identifying and mitigating natural hazards and learn to extract resources in a sustainable way.

LOCATION	DURATION	GUARANTEED ATAR	APPLICATION
Ballarat	3 years	60	VTAC / Direct
<b>ENTRY REQUIREMENTS</b> Units 3 and 4: a study score of at least 20 in any Mathematics or at least 20 in any Science; Units 3 and 4: a study score of at least 20 in any English.			
<b>ENTRY REQUIREMENTS (NON-YEAR 12)</b> Higher Education, VET and/or Work/Life Experience			

### Bachelor of Mathematical Science

Explore the basic principles and techniques of mathematics, develop strong foundations in communication and report writing, and learn how to apply your expertise in real world situations.

LOCATION	DURATION	GUARANTEED ATAR	APPLICATION
Ballarat, Online	3 years	60	VTAC / Direct
<b>ENTRY REQUIREMENTS</b> Units 3 and 4: a study score of at least 20 in Maths: Mathematical Methods or at least 20 in Maths: Specialist Mathematics; Units 3 and 4: a study score of at least 20 in any English.			
<b>ENTRY REQUIREMENTS (NON-YEAR 12)</b> Higher Education, VET and/or Work/Life Experience		<b>ESSENTIAL REQUIREMENTS</b> Non-Year 12 VTAC: VTAC Personal Statement form. See <a href="http://study.federation.edu.au">study.federation.edu.au</a>	

### Graduate Certificate in Brewing

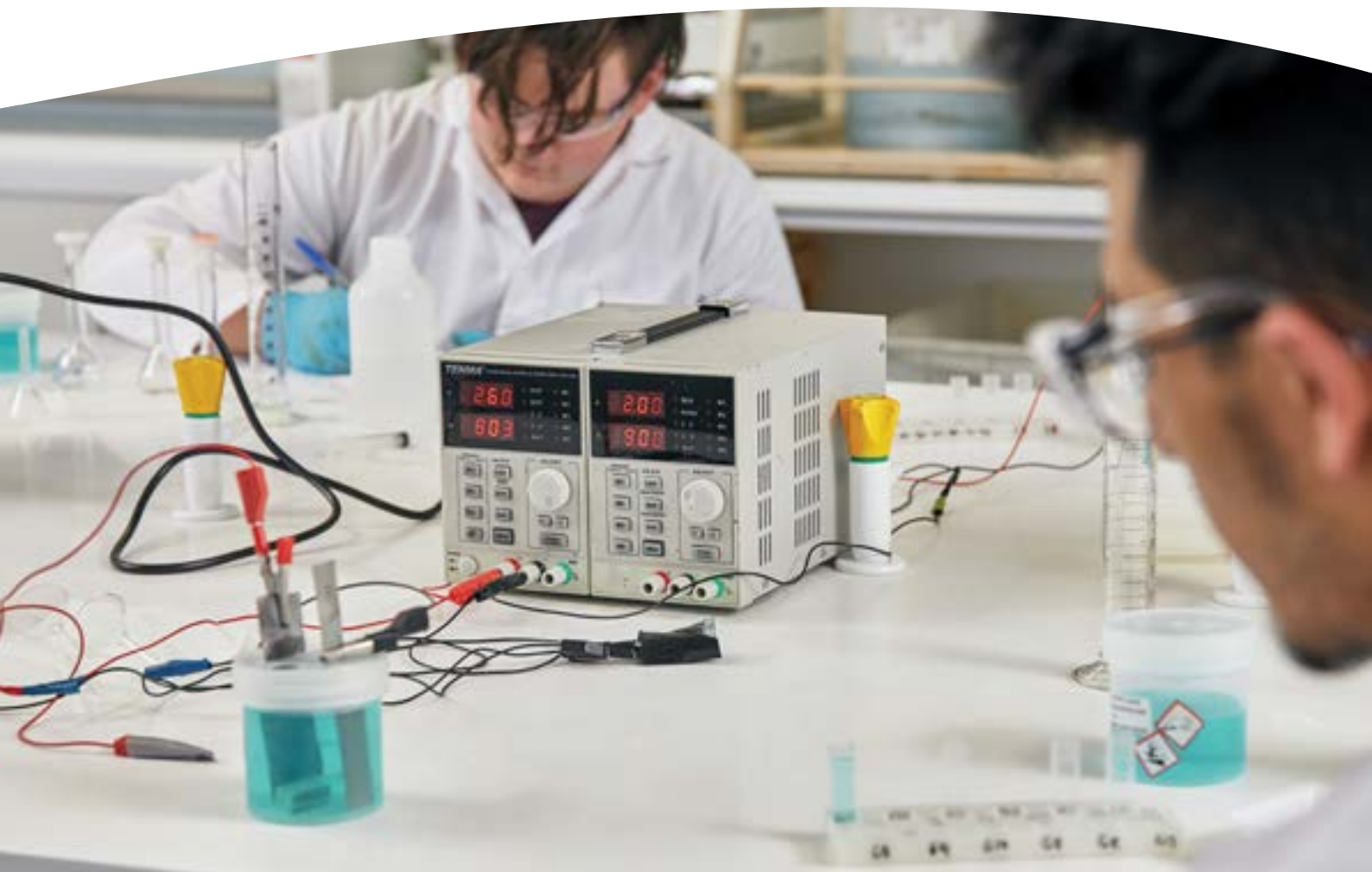
Develop an in-depth knowledge of the scientific principles and practice of malting and brewing. Learn about the raw materials, wort production, fermentation and analysis of the brewing process, typically required for small scale breweries, suppliers of breweries, and allied industries.

LOCATION	DURATION	ATAR	APPLICATION
Ballarat	2 years	Not required	Direct
<b>ENTRY REQUIREMENTS (NON-YEAR 12)</b> See <a href="http://study.federation.edu.au">study.federation.edu.au</a>			

### Master of Data Science

Develop an advanced understanding of data science by interpreting and synthesising complex information, concepts and theories to relevant disciplines, using data science tools and methods to manage, process and analyse data. Throughout the program, you will utilise your skills to handle large volumes of data, working with real-time data, cloud computing, unstructured data and statistical models. This program is also available as a graduate certificate (0.5yr) and graduate diploma (1yr) option.

LOCATION	DURATION	ATAR	APPLICATION
Ballarat, Online	2 years	Not required	Direct
<b>ENTRY REQUIREMENTS (NON-YEAR 12)</b> See <a href="http://study.federation.edu.au">study.federation.edu.au</a>		<b>ESSENTIAL REQUIREMENTS</b> See <a href="http://study.federation.edu.au">study.federation.edu.au</a>	





# Sport, Health, Physical and Outdoor Education

At our new state of the art Health and Sports Precinct, our students develop their practical and clinical skills in a high-quality learning environment.

Offering the ideal backdrop to extend our world-class research, these facilities also provide sports science students with commercial experience in the student-led clinic and community gymnasium.

The updated anatomy and physiology laboratories also supports learning and teaching in health related programs such as exercise science, physical education, nursing, paramedicine and biomedical science.

## Undergraduate Certificate in Principles of Health Promotion

This certificate offers an opportunity to articulate into either the Bachelor of Health Sciences (Health Promotion) or Bachelor of Science with four subjects of specified credit.

LOCATION	DURATION	ATAR	APPLICATION
Online	0.5 year	Not required	Direct
<b>ENTRY REQUIREMENTS</b> Successful completion of a year 12 qualification (VCE/VCAL/interstate or overseas equivalent).			
<b>ENTRY REQUIREMENTS (NON-YEAR 12)</b> Higher Education, VET and/or Work/Life Experience			

## Undergraduate Certificate in Sport, Physical and Outdoor Education

For people looking to explore opportunities in community sport, recreation and outdoor education; and those who didn't meet entry requirements to begin a teaching degree who'd like to specialise in outdoor education, health and physical education.

LOCATION	DURATION	ATAR	APPLICATION
Online	0.5 year	Not required	Direct
<b>ENTRY REQUIREMENTS</b> Successful completion of a year 12 qualification (VCE/VCAL/interstate or overseas equivalent).			
<b>ENTRY REQUIREMENTS (NON-YEAR 12)</b> Higher Education, VET and/or Work/Life Experience			





### Diploma of University Studies (Sport, Physical and Outdoor Education)

Whether you've finished high school, completed VCAL, or want to advance your career with additional qualifications, this foundation course is a great option for you. Study mathematics, physical sciences, computing, design and materials and fast track from the diploma into the second year of a sport, physical or outdoor education degree, subject to attaining a satisfactory academic standard.

LOCATION	DURATION	ATAR	APPLICATION
Ballarat, Gippsland	1.5 years	Not required	VTAC / Direct
<b>ENTRY REQUIREMENTS</b>			
Units 1 and 2: satisfactory completion in two units (any study combination) of any Mathematics or Units 3 and 4: any Mathematics; Units 3 and 4: a study score of at least 18 in any English.			
<b>ENTRY REQUIREMENTS (NON-YEAR 12)</b>			
Higher Education, VET and/or Work/Life Experience			

### \*Bachelor of Secondary Education (Health and Physical Education Teaching)

Specialise in health and PE education as well as another teaching method in English, history, maths, psychology, science or outdoor education. Areas of study include exercise physiology, biomechanics, motor development and learning, fundamentals and foundations of health and physical education, health and human development, nutrition, physical activity, creative movement, applied sports science, contemporary curriculum design, pedagogy and assessment for teaching and learning in health and physical education.

LOCATION	DURATION	GUARANTEED ATAR	APPLICATION
Ballarat, Berwick, Gippsland	4 years	70	VTAC / Direct
<b>ENTRY REQUIREMENTS</b>			
Units 1 and 2: satisfactory completion in two units (any study combination) of Maths: General Mathematics, Maths: Mathematical Methods or Maths: Specialist Mathematics or Units 3 and 4: any Mathematics; Units 3 and 4: a study score of at least 30 in English (EAL) or at least 25 in English other than EAL.			
<b>ENTRY REQUIREMENTS (NON-YEAR 12)</b>		<b>ESSENTIAL REQUIREMENTS</b>	
Higher Education, VET and/or Work/Life Experience		Working with Children (WWC), Police record check. See <a href="http://study.federation.edu.au">study.federation.edu.au</a>	
<b>PROFESSIONAL RECOGNITION</b>			
Victorian Institute of Teachers (VIT)			

\*Proposed course only. Subject to Federation's course accreditation processes.

### Bachelor of Outdoor and Environmental Education

Now is a great time to learn leadership, teaching and people skills to educate students about the outdoors and the environment. This course has a blend of hands-on and theoretical work, with subjects including outdoor leadership, community and bush environments, and coastal environments. You can also choose to major in tourism, human behaviour or conservation science. Perhaps you'll work in resorts, councils or community organisations. And maybe you'll start your own ecotourism company.

<b>LOCATION</b> Ballarat, Gippsland	<b>DURATION</b> 3 years	<b>GUARANTEED ATAR</b> 50	<b>APPLICATION</b> VTAC / Direct
<b>ENTRY REQUIREMENTS</b> Units 3 and 4: a study score of at least 20 in any English		<b>ENTRY REQUIREMENTS (NON-YEAR 12)</b> Higher Education, VET and/or Work/Life Experience	
<b>ESSENTIAL REQUIREMENTS</b> Working with Children (WWC), Police record check. See <a href="http://study.federation.edu.au">study.federation.edu.au</a>			
<b>PROFESSIONAL RECOGNITION</b> Outdoors Victoria (OV), Outdoor Education Australia (OEA)			

### Bachelor of Sport, Physical and Outdoor Education

If you're thinking about a career in community sport and recreation, or if you're looking for a pathway into Outdoor Education or Health and PE (HPE) teaching, this degree is for you. This course offers two options to becoming a registered Health and PE teacher. If after completing first year, you have maintained a good academic standard, you may be eligible to apply for a transfer into second year of the Bachelor of Health and Physical Education. Alternatively, you may continue into a Master of Teaching in either secondary or primary teaching, and qualify as a Victorian Institute of Teaching registered teacher within 4.5 years.

LOCATION	DURATION	GUARANTEED ATAR	APPLICATION
Ballarat, Gippsland	3 years	50	VTAC / Direct
<b>ENTRY REQUIREMENTS</b>			
Units 1 and 2: satisfactory completion in two units (any study combination) of Maths: General Mathematics, Maths: Mathematical Methods or Maths: Specialist Mathematics or Units 3 and 4: any Mathematics; Units 3 and 4: a study score of at least 20 in any English.			
<b>ENTRY REQUIREMENTS (NON-YEAR 12)</b>		<b>ESSENTIAL REQUIREMENTS</b>	
Higher Education, VET and/or Work/Life Experience		Working with Children (WWC), Police record check. See <a href="http://study.federation.edu.au">study.federation.edu.au</a>	
<b>PROFESSIONAL RECOGNITION</b>			
VIT, Australian Council for Health, Physical Education and Recreation (ACHPER)			

## Bachelor of Exercise and Sport Science

Choose to specialise in either applied exercise programming, health or teaching and discover how to plan, implement healthy living for diverse populations. Learn through industry placements as well as practical experiences.

LOCATION	DURATION	GUARANTEED ATAR	APPLICATION
Ballarat, <b>FLEX</b> Gippsland	3 years	50	VTAC / Direct
<b>ENTRY REQUIREMENTS</b>			
Units 1 and 2: satisfactory completion in two units (any study combination) of Maths: General Mathematics, Maths: Mathematical Methods or Maths: Specialist Mathematics or Units 3 and 4: any Mathematics; Units 3 and 4: a study score of at least 20 in any English.			
<b>ENTRY REQUIREMENTS (NON-YEAR 12)</b>			
Higher Education, VET and/or Work/Life Experience			
<b>PROFESSIONAL RECOGNITION</b>			
Exercise and Sport Science Australia (ESSA), and level 1 accreditation – varied.			

**FLEX** Flexible delivery is a blend of online study with regular, scheduled on-campus classes.

## Bachelor of Exercise and Sport Science (Honours)

Increase specialist knowledge and develop skills in your major field of interest in exercise and sport science. Undertake a research project, as well as coursework studies in research methodologies and communication. This is a fourth-year course for graduates of science, IT and mathematical science undergraduate degrees. It serves as a prelude to a research higher degree.

LOCATION	DURATION	ATAR	APPLICATION
Ballarat	1 year	Not required	Direct
<b>ENTRY REQUIREMENTS (NON-YEAR 12)</b>			
See <a href="http://study.federation.edu.au">study.federation.edu.au</a>			

## Bachelor of International Sport Management

Delivered in partnership with the World Academy of Sport, this online degree combines industry expertise with practical academic insights. Gain access to exclusive case studies and interviews from world leaders in sport management and become a future sport leader with 21st century skills.

LOCATION	DURATION	GUARANTEED ATAR	APPLICATION
Online	3 years	60	Direct
<b>ENTRY REQUIREMENTS</b>			
Applicants will have completed the equivalent of Victorian Certificate of Education (VCE) Year 12 with a study score of at least 25 in English and successful completion of at least Year 11 Mathematics or equivalent.			
<b>ENTRY REQUIREMENTS (NON-YEAR 12)</b>			
Higher Education, VET and/or Work/Life Experience			

## Bachelor of Sport Management (Honours)

This course aims to develop your specialist knowledge and skills in a major field of sport management. Graduates are attractive to employers interested in motivated employees with demonstrated research skills, providing greater opportunity for promotion in the workplace.

LOCATION	DURATION	ATAR	APPLICATION
Ballarat	1 year	Not required	Direct
<b>ENTRY REQUIREMENTS (NON-YEAR 12)</b>			
See <a href="http://study.federation.edu.au">study.federation.edu.au</a>			

## Bachelor of Health Sciences (Health Promotion)

Equip yourself for careers promoting health and wellbeing in the community. Develop an appreciation of health sciences and its relationship to human behaviour, scientific theory and our environment, as well as insights into the complexities of the health environment from both an illness and well-being perspective.

LOCATION	DURATION	GUARANTEED ATAR	APPLICATION
Ballarat, Gippsland	3 years	60	VTAC / Direct
<b>ENTRY REQUIREMENTS</b>			
Units 3 and 4: a study score of at least 20 in any English.			
<b>ENTRY REQUIREMENTS (NON-YEAR 12)</b>			
Higher Education, VET and/or Work/Life Experience			

**GUARANTEED ATAR** See definition on p 61

"I chose to study at Federation University because it is renowned for its health and exercise courses. Due to the smaller class sizes at Federation, I was able to get to know my cohort really well and I also had access to valuable face-to-face contact with lecturers. I loved my course and have gained valuable knowledge, skills and networking opportunities within the exercise science field which will be beneficial in my future educational and career endeavours."

**Gemma Ford**

Bachelor of Exercise and Sport Science







Andrew Russell has become one of AFL's top fitness coaches.

After graduating from Federation University, Andrew worked as an assistant coach with Essendon, before being head-hunted by Port Adelaide.

He later worked at Hawthorn for 14 years, assisting the club to win four premierships.

Currently working as Carlton Football Club's Director of High Performance, Andrew keeps the team motivated and in optimum physical condition.

"The quality of the lecturers and the learning environment in my course definitely set me up for work life."

**Andrew Russell**  
Sport Science graduate

### Bachelor of Health Sciences (Honours)

Undertake a research project, as well as coursework studies in research methodologies and communication. This is a fourth-year program for graduates of a science, IT or mathematical science undergraduate degree and serves as a prelude to a research higher degree.

LOCATION	DURATION	ATAR	APPLICATION
Ballarat	1 year	Not required	Direct
<b>ENTRY REQUIREMENTS (NON-YEAR 12)</b> See <a href="http://study.federation.edu.au">study.federation.edu.au</a>			

### Master of Clinical Exercise Physiology

Explore how health sciences integrates with the practical ability to develop and manage exercise programs for the prevention, treatment and ongoing management of injuries, chronic disease and complex conditions. Clinical knowledge, skills and experience is further applied to the completion of a research thesis or project.

LOCATION	DURATION	ATAR	APPLICATION
Ballarat	1.5 years	Not required	Direct
<b>ENTRY REQUIREMENTS (NON-YEAR 12)</b> See <a href="http://study.federation.edu.au">study.federation.edu.au</a>		<b>ESSENTIAL REQUIREMENTS</b> Interview. See <a href="http://study.federation.edu.au">study.federation.edu.au</a>	
<b>PROFESSIONAL RECOGNITION</b> Exercise and Sport Science Australia (ESSA)			

### Master of Strength and Conditioning (by Coursework)

Gain accreditation required to work with high achieving athletes and equip yourself with the skills to determine physical qualities such as strength, power, speed, agility and endurance. Other subject areas covered include recovery, nutrition, injury, prevention and rehabilitation.

LOCATION	DURATION	ATAR	APPLICATION
Ballarat	1.5 years	Not required	Direct
<b>ENTRY REQUIREMENTS</b> See <a href="http://study.federation.edu.au">study.federation.edu.au</a>		<b>ESSENTIAL REQUIREMENTS</b> Interview. See <a href="http://study.federation.edu.au">study.federation.edu.au</a>	








# Higher Degrees by Research

## Research with Impact

From preventing injuries in Australian football to using our genetic codes to tailor treatments for high blood pressure and heart disease – research at Federation University Australia makes a difference in the real world.

Ranking well above global standards, our research has received the highest possible five-out-of-five rating in seven areas under the Excellence in Research Australia (ERA) results.

ERA 2018 RESULTS		
	SPECIFIC FIELDS OF RESEARCH (4 DIGIT FoR CODE)	BROAD FIELDS OF RESEARCH (2 DIGIT FoR CODE)
 <b>RATING 5</b> <b>WELL ABOVE WORLD STANDARD</b>	Applied Mathematics Environmental Science and Management Civil Engineering Clinical Sciences Human Movement and Sports Science Nursing	Environmental Sciences
 <b>RATING 4</b> <b>ABOVE WORLD STANDARD</b>	Artificial Intelligence and Image Processing	Medical and Health Sciences
 <b>RATING 3</b> <b>WORLD STANDARD</b>	Pure Mathematics Education Systems Sociology Psychology Historical Studies	Mathematical Sciences Information and Computing Sciences Studies In Human Society Psychology and Cognitive Sciences

In Australia and overseas we work with research bodies and industries, as well as other leading universities. And while our research has national and international significance, we also focus on regional matters close to our heart.

Powered by outstanding people, our research helps build the communities we're proud to be part of.

### Research Priority Areas and Emerging Research Areas

We bring together groups and teams of world leading researchers from multi-disciplinary and cross-disciplinary backgrounds into highly-focused centres of research endeavour. Our current research priorities are:

1. Health and Wellbeing
2. Society and the Environment
3. Virtual, Digital and Computational Environments

We also recognise our emerging areas of research strength. We are seeking to expand the volume of world class research in broad discipline areas including:

1. Education
2. Engineering
3. History and Archaeology
4. Commerce, Management, Tourism and Services

[federation.edu.au/applyforresearch](https://www.federation.edu.au/applyforresearch)

## Graduate Research Studies

We offer supervisions across a large range of study areas.

STUDY AREA	PhD (DOCTOR OF PHILOSOPHY)	MASTERS
Business	✓	✓
Education	✓	✓
Engineering	✓	✓
Human Movement	✓	✓
Humanities and Social Sciences	✓	
Information Technology	✓	✓
Nursing	✓	✓
Psychology	✓	
Science	✓	✓
Visual and Performing Arts	✓	✓

Not all programs are available on all campuses.

Table provided below for study area offering by campus.

DISCIPLINE	LOCATION
Business	Ballarat, Berwick, Gippsland
Education	Ballarat, Berwick, Gippsland
Engineering	Ballarat, Berwick, Gippsland
Human Movement	Ballarat
Humanities and Social Sciences	Ballarat, Berwick, Gippsland
Information Technology	Ballarat, Berwick, Gippsland
Mathematics	Ballarat, Berwick, Gippsland
Nursing	Ballarat, Berwick, Gippsland
Occupational Health and Safety	Ballarat
Psychology	Ballarat, Berwick, Gippsland
Science	Ballarat, Berwick, Gippsland
Visual and Performing Arts	Ballarat

## Doctor of Philosophy

LOCATION	DURATION	APPLICATION
Ballarat, Berwick, Gippsland	3 years	Direct
<b>ENTRY REQUIREMENTS</b> Bachelor degree and subsequent additional honours degree (first or second class); or Masters by Research degree; or current Federation University Australia Masters by Research candidate with sufficient research capability to demonstrate PhD capacity, assessed via a formal Confirmation of Candidature process; or Honours equivalence, for applicants who have completed a Master by coursework or have appropriate professional experience. All students must have previously completed a thesis or dissertation demonstrating the ability to undertake research at a PhD level. Refer to <a href="https://www.federation.edu.au/applyforresearch">federation.edu.au/applyforresearch</a>		

## Masters by Research

LOCATION	APPLICATION	DURATION
Ballarat, Berwick, Gippsland	Direct	1.5 years
<b>ENTRY REQUIREMENTS</b> Bachelor degree and subsequent additional honours degree (first or second class) and which includes a dissertation demonstrating the ability to undertake research at a Masters level; OR Honours equivalence, such as a combination of professional, qualifications and research experience, including Masters by coursework. Refer to <a href="https://www.federation.edu.au/applyforresearch">federation.edu.au/applyforresearch</a>		



# What will it cost me?

## Everything you need to know

University fees. For most of us, they're simply part of the deal. But how much will they set you back? And what kind of payment options are available? We're here to help with any questions you have, or financial advice you need. Because when you're on top of your finances, it's much easier to focus on your studies and make the most of your time here with us.

### Higher education fees

You are a domestic student if you're an Australian or New Zealand citizen, or an Australian permanent resident. The fees you will be charged depend on whether you receive a Commonwealth supported place or a full fee paying place, the course you choose to study and the year you commence.

### Undergraduate fees

All of our undergraduate courses, including bachelor, associate degree and honours offer **Commonwealth supported places (CSP)**. You make a contribution towards the cost of the course and the Australian Government contributes the rest. The fees you pay are called the **student contribution amount** and you may be eligible to defer payment of your fees through HECS-HELP. From 1 January 2021, you can receive a 10% HECS-HELP discount for upfront student contribution payments of \$500 or more if you are eligible for HECS-HELP assistance.

### Postgraduate fees

Many of our postgraduate courses, including graduate certificate, graduate diploma and master by coursework offer Commonwealth supported places however, some postgraduate courses only offer **full fee-paying places**. Federation University does not receive any government funding for fee-paying places and you contribute the full cost of your course. You may be eligible to defer payment of your fees through FEE-HELP.

For more info, head to [federation.edu.au/studentfees](https://federation.edu.au/studentfees) or [studyassist.gov.au](https://studyassist.gov.au). You can also call us on **1800 333 864** and chat to our Student Finance team.

### Higher Degrees by Research

If you're a domestic student enrolled in a Higher Degree by Research course, you'll be supported by a Research Training Program (RTP) fee-offset place, which covers your tuition fees for three years, by the Australian Government.

For more info head to [federation.edu.au/research](https://federation.edu.au/research)

### Additional costs

There may be other costs on top of your tuition fees, such as textbooks and materials. These vary between TAFE, undergraduate and postgraduate courses. For example, TAFE courses tend to have more material costs as they're more practical.

Moving away from home? Then it's important to think about living expenses too, such as rent, electricity, gas, water, food and phone bills – just so you can make a budget and stick to it.

### Financial Information

At our Ballarat, Berwick and Gippsland campuses, our Student Financial Support Officers can help you out with everything from personal budgeting and referrals to financial aid organisations, to emergency aid, student grants and student loans.

To book an appointment, phone Ballarat **03 5327 9470** or Berwick and Gippsland **03 5122 8945**

For more information head to:

[federation.edu.au/financialsupport](https://federation.edu.au/financialsupport)

### Student Services and Amenities Fee (SSAF)

This fee provides funding for services and amenities such as sporting and recreational activities, employment and career advice, child care, financial advice and food services.

We calculate this fee based on your enrolment within the calendar year, and charge it progressively for each semester. If you're having trouble paying this fee – and you're eligible – the SA-HELP loan scheme can help with paying all or part of it.

Find out more information about the SSAF at [federation.edu.au/fees/ssaf](https://federation.edu.au/fees/ssaf) or [studyassist.gov.au](https://studyassist.gov.au)

### VET (TAFE) fees

For information on VET (TAFE) fees, your first port of call is online at [federation.edu.au/tafe-fees](https://federation.edu.au/tafe-fees)





## Higher education applications explained

### What applicant type are you?

This will determine how you need to apply, and what you should include with your application.

### Are you a current Year 12 or recent secondary student?

You are currently completing an Australian Year 12, within Australia or overseas, or completed Year 12 in 2020 or 2019, with no further study. Your application will be assessed based on your Year 12 results, including your adjusted ATAR which factors in considerations based on SEAS or subject adjustments, and any 'essential requirements' detailed in [study.federation.edu.au](https://study.federation.edu.au). We can usually access your Year 12 results; you do not need to provide us with a copy.

### Are you a non-year 12 applicant?

You previously studied all or part of a Higher Education (University level) program, have completed VET (TAFE) studies at Certificate III level or higher, or have 'work and life experience'.

We will consider all your previous studies and experience when reviewing your application, along with any 'essential requirements' detailed in [study.federation.edu.au](https://study.federation.edu.au).

Your application must include evidence of any previous studies, your CV detailing work and relevant volunteer experience, and completed 'essential requirements' where applicable.

### Are you an international applicant?

You are an international applicant if you are not the holder of Australian or New Zealand Citizenship, Australian PR or a Permanent Humanitarian Visa.

International applicants studying VCE in the year of application should refer to the advice provided for current Year 12 students.

All other international applicants should refer to [federation.edu.au/international](https://federation.edu.au/international)

### What are 'essential requirements'?

In addition to your application, some courses have essential requirements, such as auditions, entrance tests or interviews. You must complete this to be considered for an offer. Refer to the individual course entries to check if any apply to the course you intend applying for.

### What is an 'adjusted ATAR'?

This is where additional points are added to your ATAR aggregate, increasing your rank accordingly. These adjustments include subject adjustments, where points are added based on achieving minimum scores in identified subjects, and may also cover access and equity factors which are applied for via SEAS (Special Entry Access Scheme) applications lodged through VTAC.

### What are 'guaranteed ATARs'?

As the minimum ATAR varies each year, driven by the popularity of a course, the performance of applicants, and the number of offers made, we provide a 'guaranteed ATAR' for most courses, so you can plan with confidence. If your ATAR is equal to or above the published guaranteed ATAR, and you meet all other entry requirements, we will guarantee you an offer for that course. It is important to note that it is not a minimum ATAR, or an ATAR 'cutoff' – if your ATAR is below this, you may still receive an offer. View our guaranteed ATARs via [federation.edu.au/atar](https://federation.edu.au/atar)

### Consideration on equity grounds

**We believe all students should have equal opportunity.**

Year 12 applicants should look at the Special Entry Access Scheme (SEAS) at [vtac.edu.au/seas](https://vtac.edu.au/seas) to see what special circumstances may apply to them (i.e. disability or financial disadvantage).

Check the potential impact a SEAS application could have on your ATAR with our online SEAS calculator, and get an estimate of your adjusted ATAR: [federation.edu.au/seas-calculator](https://federation.edu.au/seas-calculator)

Non Year 12 applicants who feel their education was impacted by disadvantage can ask for this to be considered in their application. Learn more via [federation.edu.au/seas](https://federation.edu.au/seas)

## How do I apply?

Some applicants must apply via VTAC, some must apply directly to Federation, and some may choose between the two:

- Those applying to study with more than one institution:  
**VTAC**
- Current Year 12 applicants applying for courses listed in VTAC:  
**VTAC**
- Recent secondary applicants applying to study only with Federation:  
**VTAC or Fed Direct**
- Non-year 12 applicants applying to study only with Federation:  
**VTAC or Fed Direct**
- Those studying VCAL or the International Baccalaureate (IB) in Victoria:  
**VTAC**
- Applicants for courses not listed in VTAC:  
**Fed Direct**
- Applicants for mid-year entry:  
**Fed Direct**

**Deferring**  
(put your studies on hold)

Do you want to study, but need some time away first?  
Most of the time you'll be able to defer your offer in an undergraduate course for up to one year, but for some courses this isn't possible.  
Check [federation.edu.au/defer](https://www.federation.edu.au/defer)

**Have questions,  
queries or concerns?**

We are here to support you through the application process.  
We can help you navigate entry requirements, determine the right starting point for you, discuss pathway options, and can point you to study support programs that you can access prior to and throughout your studies.

Call us on **1800 333 864** or chat via [study.federation.edu.au](https://www.study.federation.edu.au)



## My next steps

Ready to go? Just follow these steps and you're on your way

### Step 1

Check the entry requirements, which may include specific VCE units or a previous qualification.

- Year 12 students need to meet VTAC Entry Requirements that may include achieving specified scores in pre-requisite subjects and ATAR.
- Non Year 12 students may need to have completed pathway programs or other studies, or have a significant level of relevant experience to gain admission.

**[study.federation.edu.au](https://study.federation.edu.au)**

### Step 2

Check for any essential requirements that you need to complete in addition to your application. Essential requirements may include auditions, tests or interviews.

**[study.federation.edu.au](https://study.federation.edu.au)**

### Step 3

Complete your application to study with Federation; all applications are submitted online.

### Applying through VTAC

**[vtac.edu.au](https://vtac.edu.au) | 1300 364 133**

All VTAC applications are submitted online.

### Apply Directly

**[federation.edu.au/apply](https://federation.edu.au/apply) | 1800 333 864**

If you want some help getting started, or you need to know what level of study you should start at, we can help.

**Call 1800 333 864** or submit your enquiry via the Federation Request and Enquiry Dashboard **[fred.federation.edu.au](https://fred.federation.edu.au)**



There's more  
than one way

## Choose your path here

We welcome students from all backgrounds, life stages and education levels. And we firmly believe there's more than one way to get the qualification you need to jumpstart your career.

We offer foundation, TAFE, undergraduate, postgraduate and research courses.

## A different way in

Some of our students may not immediately meet entry requirements – that's why we've designed new pathways for students from every walk of life.

### **VCAL at Federation College**

If you haven't completed VCE and you're aged above 15, then you can complete VCAL – a hands-on learning qualification. It's designed to re-engage students who would like a different secondary schooling pathway.

Foundation VCAL has a strong emphasis on literacy and numeracy.

As an Intermediate VCAL student, you'll keep developing your knowledge and employability skills. Senior VCAL students can choose to continue their studies through Federation TAFE or FAST.

**[federation.edu.au/schools/federation-tafe/federation-college](https://federation.edu.au/schools/federation-tafe/federation-college)**

### **P-Tech**

The P-TECH program provides students with the skills and support required to successfully navigate the transition from school to work or university. Students will leave Federation College as skilled candidates for jobs or further education.

Industry learning experiences and workplace visits help students to identify career interests and further study options. P-TECH prepares students for higher education and the workplace earlier than is typical. P-TECH students are well equipped for a range of careers or university degrees.

**[federation.edu.au/ptech](https://federation.edu.au/ptech)**

### **TAFE**

TAFE is an amazing career pathway – but did you know you can also use it as a stepping stone towards higher education studies? Many of our study only TAFE options provide a great pathway into relevant bachelor degrees.

**[federation.edu.au/schools/federation-tafe](https://federation.edu.au/schools/federation-tafe)**

### **FAST**

Guarantee yourself a place with Federation through our FAST course (Foundation Access Studies), and start the journey towards your dream degree. FAST helps you brush up on your study skills – whether you've just finished Year 12 and don't have the entry requirements you need, or you're a mature student looking to re-enter studies.

When you've successfully completed the program, you're guaranteed a place in a Federation degree perfect to your skillset (some credit may apply). See page 16 of this guide for further information.

If you require support with your English language skills our FAST (English for Academic Purposes) course may be the pathway for you. Education; Engineering; Information Technology; and Sport and Outdoor Education pathway courses exist as part of the Diploma of University Studies. For further information view the relevant area of study in this publication.

Scan to request more information

**Federation.edu.au**

**1800 333 864 (1800 FED UNI)**

#feduni      /feduniaustralia



Disclaimer: Information contained in this brochure was correct at the time of printing. Printed April 2021.

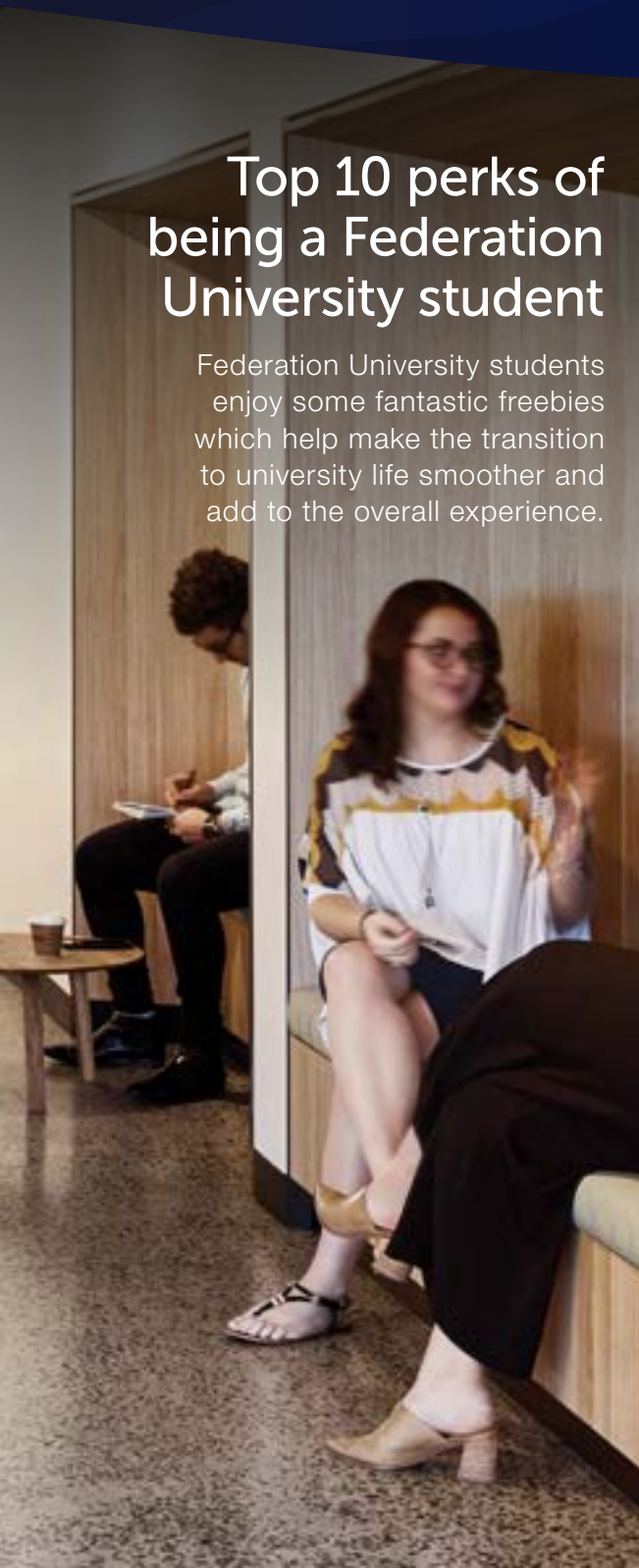
Federation University Australia reserves the right to alter any course, procedure or fee, as deemed necessary. Prospective students should confirm course information by visiting [federation.edu.au](http://federation.edu.au) and [vtac.edu.au](http://vtac.edu.au) or by contacting the University directly. The information contained in this brochure is specifically for domestic students –international students should contact International education on a +61 3 5327 9018.

Produced by Federation University Australia, Marketing.  
Federation University Australia programs are delivered with Victorian and Commonwealth Government funding to eligible applicants.  
CRICOS Provider No. 00103D. National RTO Code: 4909.

## Top 10 perks of being a Federation University student

Federation University students enjoy some fantastic freebies which help make the transition to university life smoother and add to the overall experience.

- 1. Access to thousands of films for free** – Don't want to pay a monthly subscription to Netflix? That's ok, as all Fed students receive free access to Kanopy which screens the latest movies, inspiring documentaries and award-winning foreign films which can be enjoyed from your TV, mobile phone and tablet.
- 2. Employment opportunities** – We help our students develop their resumes and keep them informed of casual, part-time and graduate employment opportunities as part of our Edge program. As not only are our programs designed to make sure our graduates are job-ready, we also want to help with employment while studying, hence why Federation is rated Victoria's #1 university for employability.
- 3. Free parking** – Did you know that Fed students enjoy free parking at our Mt Helen and Gippsland campuses and heavily discounted parking at Berwick? This means more money in your pocket each year. Our Berwick Campus is also only a short stroll away from the train station, offering easy access to public transport.
- 4. Discounted memberships** – Join our world-class Health and Sports Precinct at our Mt Helen Campus which includes an excellent community gym and indoor swimming pool which means you can swim all-year-round. The Latrobe Leisure Centre, featuring swimming pool, gym, sauna, basketball court and squash facilities, is also right on the doorstep of our Gippsland Campus. Wherever you're studying we have ways for you to stay physically active, compete in your favourite sports and can even assist you to perform at high levels through our sport and fitness programs.
- 5. Student Groups** – Whatever your interest, you can find a club or society to join (or start your own!) to help give you the full university experience. Immerse yourself in the student life and have some fun while you study.
- 6. Art galleries** – Visit the Switchback Gallery at our Gippsland Campus or Post Office Box Gallery at our Camp Street Campus and view the outstanding works from renowned artists, as well as our third-year students.
- 7. Fancy a hit of golf?** – The Gippsland Campus is located directly next to a nine-hole golf course!
- 8. Free Wi-Fi** – Access to free Wi-Fi while on campus including Office 365 and a range of apps.
- 9. Feel safe** – Our security officers are on campus ensuring you feel safe day and night.
- 10. Support** – There is plenty of support available for all students with our FedReady program, health centre, counselling and disability support services, Aboriginal Education Centre and careers and employability program – that's why we're Victoria's #1 university for student support.



[Federation.edu.au/openday](https://Federation.edu.au/openday)

# OPEN

# DAY

Online  
Ballarat  
Berwick

15 August 2021

Gippsland

# Feed